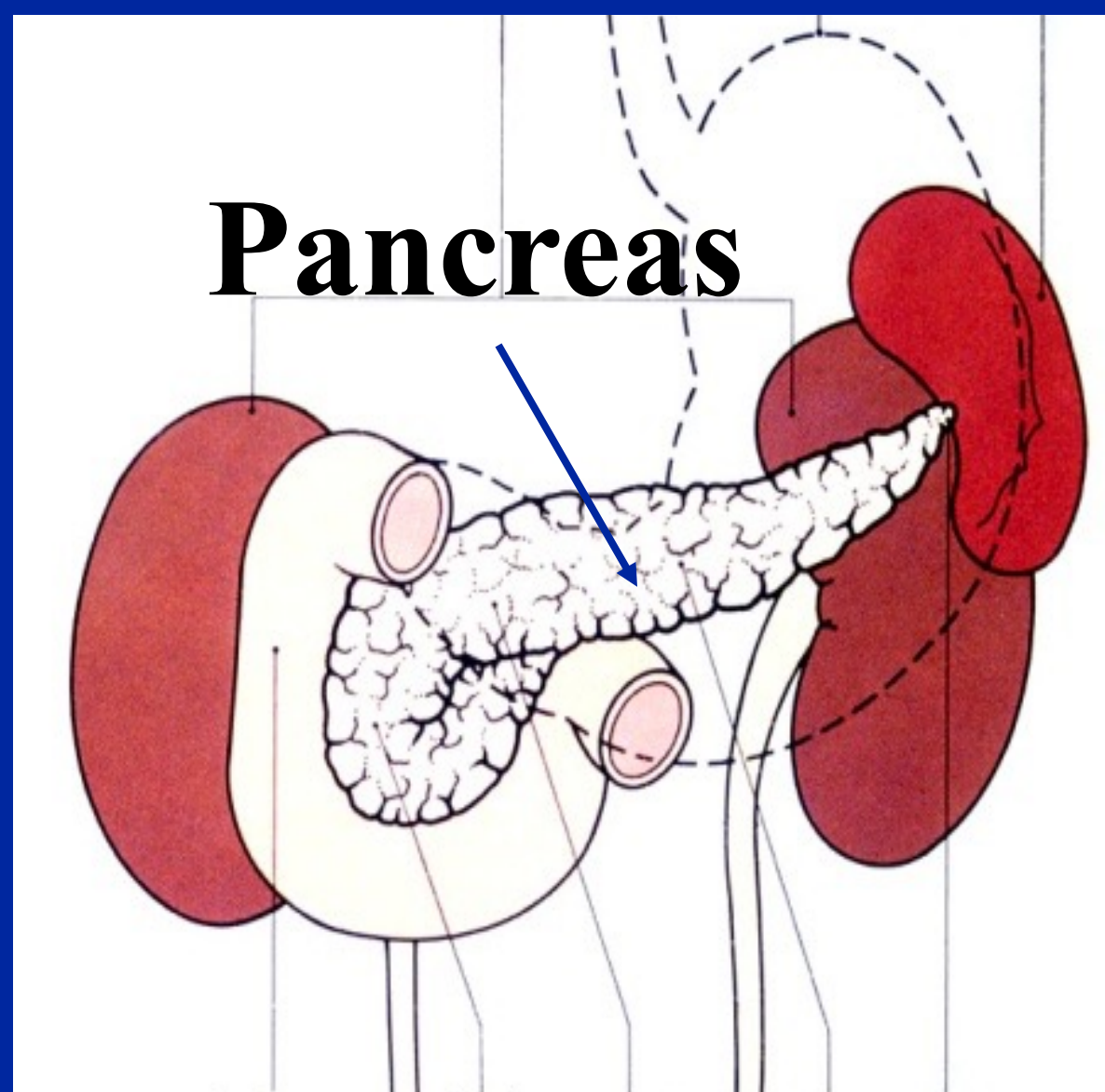


# Pancreatic Research Group

Director - Professor Minoti Apte; [m.apte@unsw.edu.au](mailto:m.apte@unsw.edu.au); 0402964142



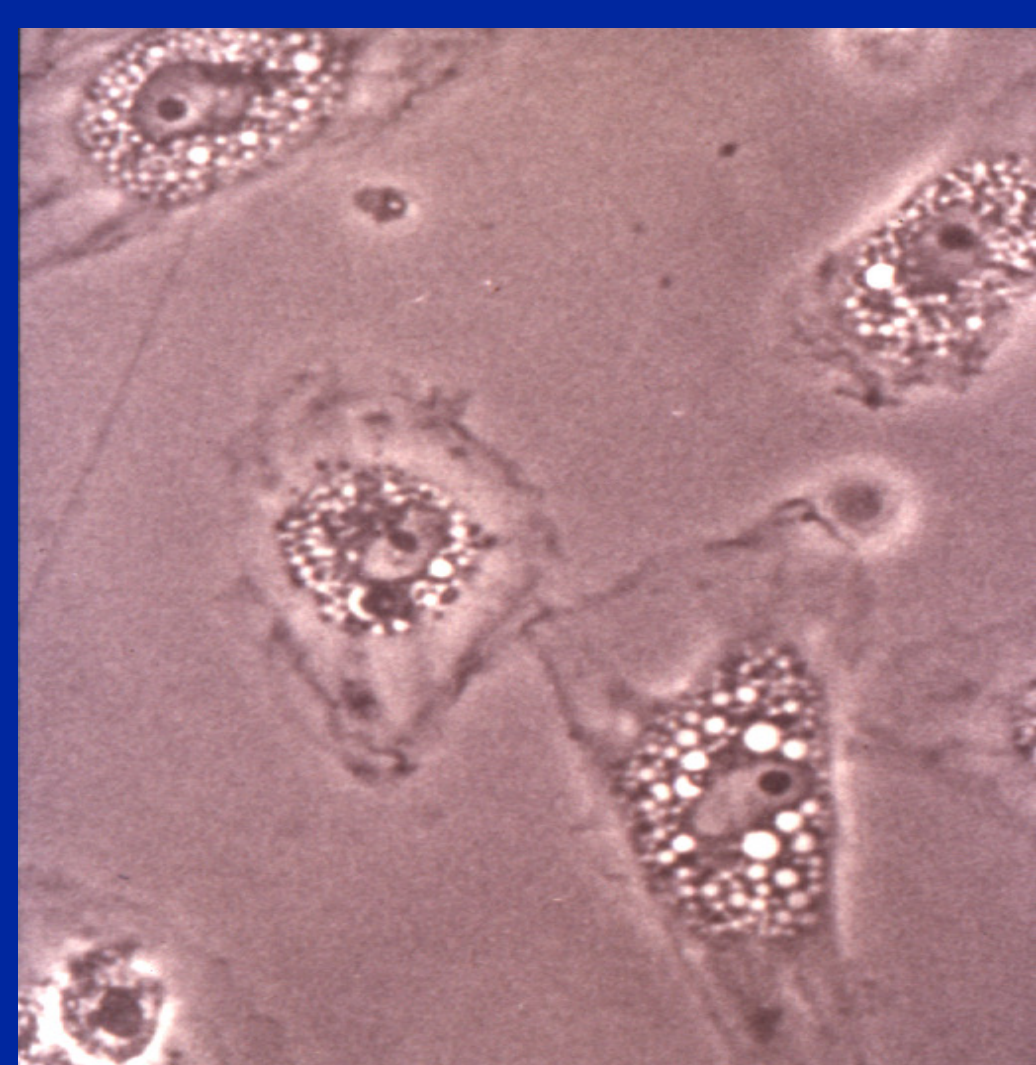
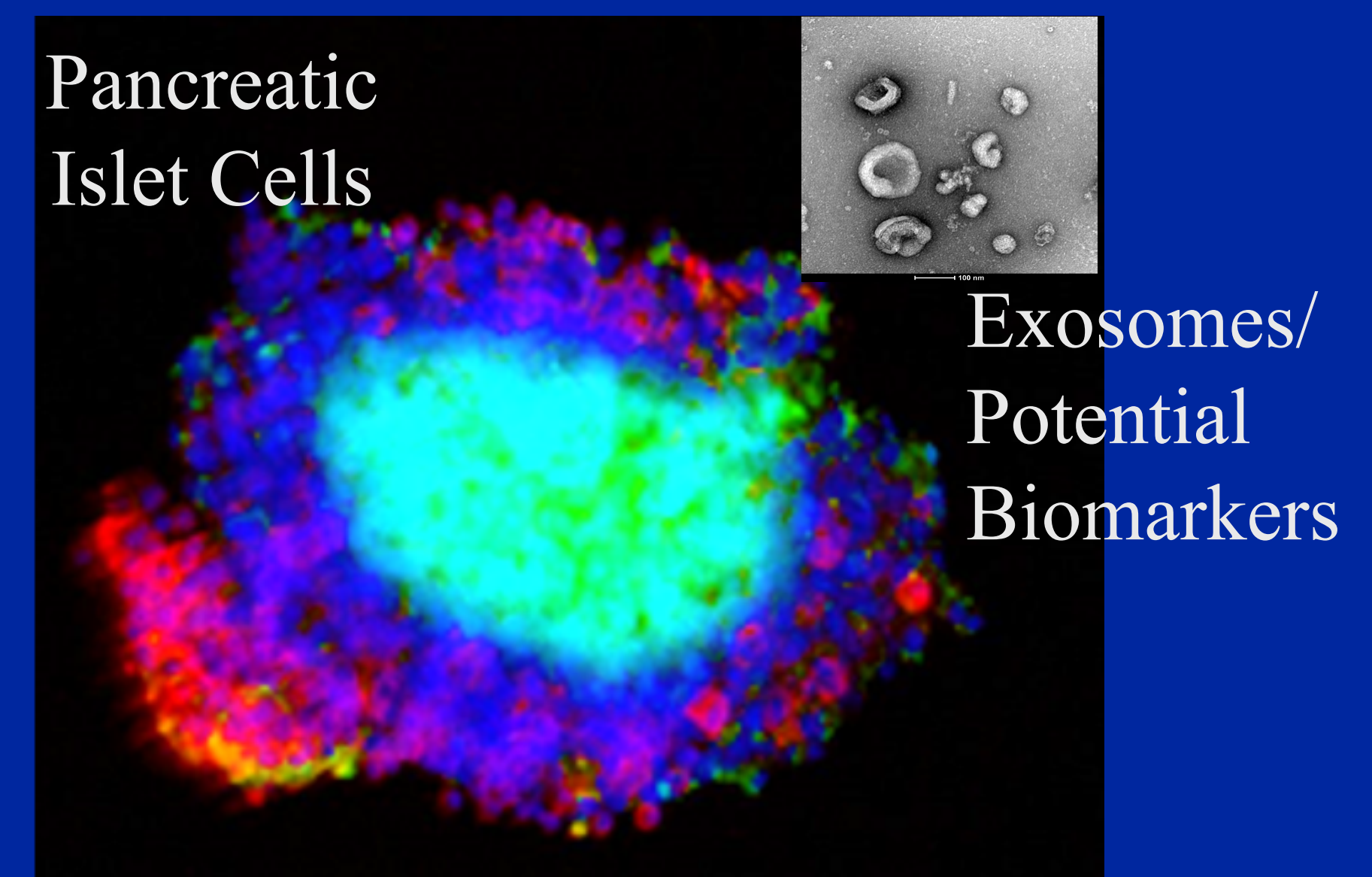
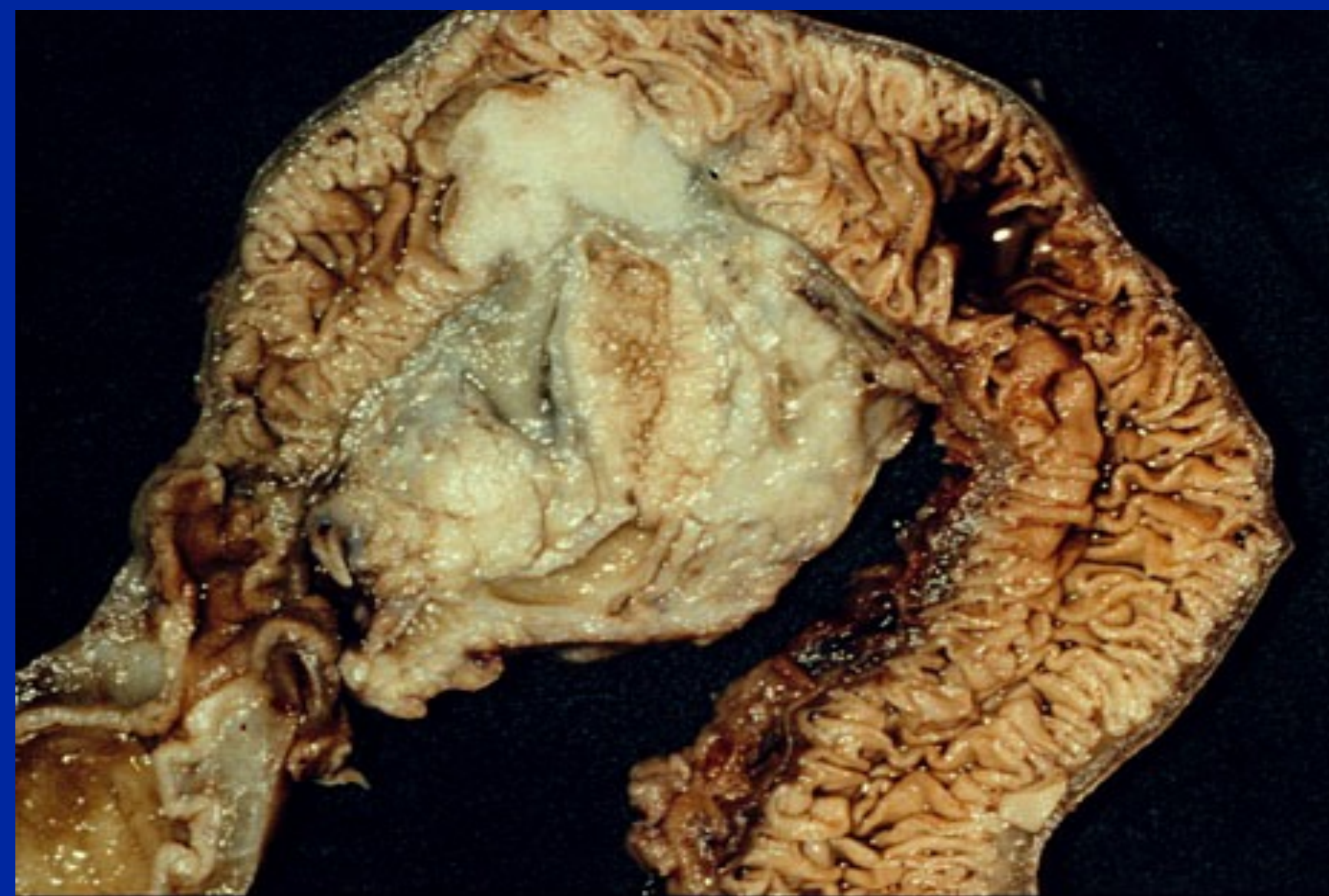
## Pancreas – a major digestive organ

Major Pancreatic Diseases with  
Significant Morbidity and Mortality  
Novel Therapies Required

Pancreatitis (Inflammation)

Pancreatic Cancer

Pancreatic Cancer-Related Diabetes



## Pancreatic Stellate Cells (PSCs)

- **World first methodology** for isolation and culture developed by our Group in 1998
- **Key roles** in pancreatitis and pancreatic cancer

## Current Research Projects

- Role of PSCs in progression of pancreatitis
- Novel treatments targeting the stroma in pancreatic cancer
- Pancreatic cancer-related diabetes (PCRD)

*Our Honours students have published their work in major journals*

- Patel et al, Carcinogenesis 35:1891-900, 2014
- Lee et al, Alcohol Clin Exp Res 39:2123-33, 2015
- Xu, ... Liu et al, accepted for publication, Br J Cancer, 2020