



THE UNIVERSITY OF
NEW SOUTH WALES

DEPARTMENT OF PHYSIOLOGY
SCHOOL OF MEDICAL SCIENCES

PHSL3221

ENDOCRINE, REPRODUCTIVE AND DEVELOPMENTAL PHYSIOLOGY

SESSION 2, 2012

CONTENTS

	Page
1. Course staff	3
2. Course information	4
3. Assessment	7
4. Problem based learning	8
5. Academic honesty and plagiarism	11
6. Course schedule and attendance requirements	12
7. Resources for students	13
8. Continual course improvement	14
9. General information	14
10. Endocrinology assignment	17
11. Practical class notes: Gestational diabetes mellitus	20
12. Past exam questions	31
13. Timetable	42

1. COURSE STAFF

Course convenor:

- Dr Karen Gibson
Senior Lecturer
Department of Physiology, School of Medical Sciences
Lowy Building, Room 413
k.gibson@unsw.edu.au
9385 3650

Other Teaching Staff (Lecturers)*:

Name	Department	Contact e-mail
Dr James Cantley	Diabetes & Obesity Research Program, Garvan Institute of Medical Research	j.cantley@garvan.org.au
Dr Anne Clark	Medical Director, Fertility First Centre for Reproductive Health	Please arrange contact through Dr Gibson
Dr Angela Finch	SOMS/Pharmacology	a.finch@unsw.edu.au
Dr Ross Laybutt	Diabetes and Obesity Research Program, Garvan Institute of Medical Research	r.laybutt@garvan.org.au
Dr Kei Lui	Director, Department of Newborn Care, Royal Hospital for Women/Senior Lecturer, SWCH	Please arrange contact through Dr Gibson
Scientia Professor Emeritus Eugenie Lumbers	SOMS/Physiology & Pharmacology	Please arrange contact through Dr Gibson
Dr Nigel Turner	Diabetes & Obesity Research Program, Garvan Institute of Medical Research	n.turner@garvan.org.au
Dr Michael Swarbrick	Diabetes and Obesity Research Program, Garvan Institute of Medical Research	m.swarbrick@garvan.org.au
Dr Lei Zhang	Eating Disorder Research Group, Neuroscience Research Program, Garvan Institute of Medical Research	l.zhang@garvan.org.au

* consultation times by arrangement with specific staff member

2. COURSE INFORMATION

2a) General Introduction

Endocrine, Reproductive and Developmental Physiology is a 3rd year Science Course / Level III Physiology course usually undertaken upon successful completion of Physiology 1A (PHSL2101/2121/2501) and 1B (PHSL2201/2221/2502). It is worth six units of credit (6 UOC). The course usually forms part of a major in Physiology and/or Pharmacology in a Bachelor of Science or Bachelor of Medical Sciences degree.

This course has been developed with the aim of stimulating your interest and expanding your knowledge in the areas of endocrinology, reproduction, fertility and fetal development. The endocrine and reproductive physiology component builds on areas covered in Physiology 1B. The study of developmental physiology examines a wide range of organ systems and endocrine functions in the fetus, newborn and pregnant woman, and in this part of the course you will draw on your knowledge of these systems and processes from the relevant parts of Physiology 1A and 1B, and also your understanding of basic anatomy and biochemistry. The Level III Physiology subject most closely related to this course is Cardiovascular Physiology and Pathophysiology (PHSL3211).

The learning and teaching philosophy that underpins this course is our firm belief that a subject offered in the final session of your degree should not only develop a deeper understanding of physiology, but also foster the development of skills useful for your future career. All learning activities in the course are designed with this in mind.

2b) Aims

This course aims to:

1. develop your understanding of the structure, function, control and pathophysiology of endocrine systems;
2. develop your understanding of the mechanisms associated with male and female reproduction and fertility;
3. provide you with an understanding of normal fetal growth and development, post-natal adaptation and survival, and maternal physiology;
4. develop your skills in teamwork, problem solving, communicating with peers, making presentations, independent learning, data analysis and report writing; and
5. stimulate an interest in and appreciation of biomedical research.

2c) Science Graduate Attributes, UNSW

UNSW aims to provide an environment that fosters in you the following qualities, skills and attributes during your time here as a Science student:

Science Graduate Attributes, UNSW

1. **Research, inquiry and analytical thinking abilities.**
Technical competence and discipline specific knowledge. Ability to construct new concepts or create new understanding through the process of enquiry, critical analysis, problem solving, research and inquiry.
2. **Capability and motivation for intellectual development.**
Capacity for creativity, critical evaluation and entrepreneurship. Ability to take responsibility for and demonstrate commitment to their own learning, motivated by curiosity and an appreciation of the value of learning.
3. **Ethical, Social and Professional Understanding.**
Ability to critically reflect upon broad ethical principles and codes of conduct in order to behave consistently with a personal respect and commitment to ethical practice and social responsibility. Understanding of responsibility to contribute to the community. Respect and value social, multicultural, cultural and personal diversity.
4. **Communication.**
Effective and appropriate communication in both professional (intra and inter disciplinary) and social (local and international) contexts.
5. **Teamwork, collaborative and management skills.**
Ability to recognise opportunities and contribute positively to collaborative scientific research, and to perceive the potential value of ideas towards practical applications. Demonstrate a capacity for self management, teamwork, leadership and decision making based on open-mindedness, objectivity and reasoned analysis in order to achieve common goals and further the learning of themselves and others.
6. **Information literacy.**
Ability to make appropriate and effective use of information and information technology relevant to their discipline.

The generic UNSW Graduate Attributes can also be found at <https://my.unsw.edu.au/student/atoz/GraduateAttributes.html>

Endocrine, Reproductive and Developmental Physiology addresses each of these Science Graduate Attributes. Specific learning outcomes for the course, and the manner in which the course addresses the attributes, are outlined below.

2d) Specific Learning Outcomes

1. On completion of this course you should be able to demonstrate your knowledge and understanding of each of the three course themes outlined below [this relates to Science Graduate Attribute (SGA) 1]. You should be able to:
 - 1a) better understand the structure, function and control of endocrine systems (weeks 1-6), including:
 - thyroid physiology and pathophysiology
 - insulin physiology; type 2 diabetes mellitus
 - endocrine control of body weight; endocrine functions of white adipose tissue
 - biosynthesis and actions of adrenal corticosteroids
 - the adrenal medulla and pathophysiology
 - the endocrine and renal response to water immersion
 - calcium metabolism and its hormonal control
 - the renin-angiotensin system

- 1b) better understand the science underlying male and female reproduction and fertility (weeks 5-7), including:
- changes with puberty, menopause and andropause
 - hormonal contraception
 - fertility and assisted reproductive techniques
- 1c) describe the main features of fetal growth, development and adaptation to life after birth (Weeks 8-13), including:
- cardiovascular development and the unique structural and functional aspects of the fetal cardiovascular system
 - fetal fluid regulation and renal function
 - fetal endocrinology
 - structure and functions of the placenta
 - lung development and fetal breathing movements
 - maternal adaptations to pregnancy
 - the transition from fetal to neonatal life, lactation and early infant nutrition

In addition, after you have completed this course you should be able to:

2. Use your knowledge of developmental physiology to develop an understanding of major areas of current interest in developmental research [SGAs 1 & 6], including:
 - developmental origins of health and adult disease
 - imprinting/epigenetics
 - the physiological basis of neonatal intensive care
3. Demonstrate an ability to contribute effectively in a group to solve a scientific problem. An effective contribution includes critical enquiry i.e. asking questions to clarify points/prompt scientific discussion [SGAs 1, 3, 4, 5].
4. Identify areas in your knowledge of physiology that could be improved, and carry out the self-directed learning necessary to “fill the gaps” [SGAs 1, 2, 6].
5. Research scientific information and communicate it to your colleagues and academic staff in written and oral format [SGAs 1, 4, 6].
6. Critically analyse and report on experimental data in the light of current information within the literature [SGAs 1, 2, 4, 6].
7. Conduct a focused literature search on a topic related to reproduction and developmental physiology and succinctly present this synopsis to your colleagues and academic staff [SGAs 1, 2, 4, 6].
8. Demonstrate some familiarity with examples of research in areas related to fetal physiology and development [SGAs 1, 6].

2e) Teaching Strategies

A variety of teaching strategies are used in this course:

Lectures introduce aspects of core material and insights into recent research and current practice. The course convenor conducts research in fetal and developmental physiology. We are also fortunate to have a large number of guest lecturers who are expert in their particular area of research or clinical practice. This means that you will gain an insight into both the basics and the latest issues relating to each of the course themes [specific learning outcomes 1 and 2].

The **problem based learning tutorials** (PBLs) will form a large part of your study of endocrinology. These are designed not only to develop your knowledge of endocrine physiology [specific learning outcome 1a], but also to encourage the development of self directed learning,

teamwork, and communication and presentation skills [specific learning outcomes 3, 4, 5]. More information about PBL tutorials is given later in these notes.

Practical sessions and discussion classes are designed to give you a deeper understanding of particular aspects of the course. The practical class '*Gestational diabetes and screening in pregnancy*' enables you to carry out a glucose tolerance test, to learn more about gestational diabetes (a condition affecting 3-8% of pregnant women in Australia) and to examine screening principles including sensitivity, specificity, positive predictive value and negative predictive value [learning outcome 6]. You will consider the endocrine and renal control of circulating volume in the discussion class on '*Hormonal effects of water immersion*' [learning outcome 1a]. In the discussion class '*Growth and Puberty Clinical Cases*' you will have the opportunity to consider and interpret growth charts and reinforce the lecture material on growth and puberty [learning outcomes 1a/b and 3]. In '*Cross-dressing or crossing over*' you will consider sex determination in humans and the issue of intersex [learning outcomes 1b/c and 3]. During a **visit to the neonatal intensive care unit** at the Royal Hospital for Women, Randwick you will have a 'once in a lifetime' opportunity to see how our understanding of fetal and neonatal physiology is applied to treating preterm infants [learning outcome 2]. You will also critically analyse and present a research topic related to reproduction, developmental or fetal physiology in the form of an **oral presentation** [learning outcomes 7 & 8].

3. ASSESSMENT

Component	Mark allocation
PBL classes	10%
Endocrinology assignment	10%
Oral presentation	10%
Exam 1 (Endocrine & Reproduction)	35%
Exam 2 (Developmental physiology)	35%
Total	100%

Details of assessment components and their rationale

The assessment components in this course are designed to help you to develop the skills outlined in the specific learning outcomes, as well as assessing your knowledge.

Problem Based Learning Classes. Your participation and presentations in three of the four problem based learning (PBL) classes contributes 10% to your final mark. A description of problem based learning and its assessment is included on the following pages.

Endocrinology Assignment. This written report based on a case study in endocrinology will contribute to 10% of your final mark and should be handed in to the BABS, SOMS, BEES Student Office (G27 Biosciences Building) by **10 am Monday of Week 9 (17/9/12)**. Details about this assignment are on pp. 18-20. This exercise addresses the specific learning outcomes 1b, 4 and 5 (above). Please note that late submission of this assignment will incur a penalty.

Group Oral Presentation. In week 12 or 13, you will give an oral presentation in which you provide your colleagues with up to date information on a topic relating to reproduction, fetal or developmental physiology, which will constitute 10% of your final mark. You will work in small groups to prepare and present your talks, and you will be assessed both by your peers and by members of the academic staff. Each member of the group is expected to participate in the presentation and be able to answer questions on the topic. Attendance is required for all presentations (ie not just your own presentation). Topics and further details will be provided later in the session. The oral presentation session helps to achieve specific learning outcomes 1c, 2, 4, 5, 7 and 8.

Examinations. Two 90 minute examinations of equal weighting are given in this subject. The midsession exam will be held on **Thursday 30th August (Week 7)** and covers all material relating to the Endocrinology and Reproductive Physiology components of the course, including all the PBLs. The final exam will be held in the official examination period and assesses only the Fetal and Developmental Physiology component including the *Gestational diabetes and screening in pregnancy* practical class. All course material presented prior to 30th August is examinable in the midsession exam. All course material presented from the 10th September (inclusive) is examinable in the final exam. Each of these examinations will consist of multiple choice questions and short answer (5 minutes or 10 minutes) questions and are designed to help you achieve specific learning outcomes 1, 2 and 8.

Online formative assessment

Formative assessment questions are available online (via blackboard). These questions are multiple choice and are of a similar nature to those that will be in the summative exams. We strongly recommend that you use these as a guide when studying for these exams and to provide feedback to help you learn.

What other feedback can I get to help my learning and to get the most out of this course?

This is a challenging course and the course convenor is very willing to help make this an interesting, satisfying way to end your 3rd year of studies. **Past exam questions** are given at the end of this outline, and you are encouraged to work through them to provide yourself with feedback on your progress. There will be a **practice exam questions and feedback session** before the midsession exam. You are encouraged to **ask questions during lectures, tutorials and discussion classes**. You will receive **ongoing feedback on your PBL participation and presentations** in the form of emailed comments and marks, and you can also **ask your PBL facilitator for feedback** regarding your presentations and participation in discussions. You will receive feedback as well as marks for your assignment and presentations. If you plan your oral presentation early you can **ask the course convenor for feedback** on your design/planned content. If there are any other ways in which you think that you can obtain useful feedback, please contact the course convenor.

4. PROBLEM BASED LEARNING

4a) Introduction

Problem based learning provides an opportunity for you, working in a group with others, to determine what you need to know in order to solve a given problem. A facilitator/tutor is present in the class and you are provided with information relating to a clinical problem. The role of the facilitator is to maintain and/or provide direction for the group discussion, but not to lead the discussion. Each group will have approximately 10 students. Guidelines for how individuals within the group should interact will be discussed and determined by group members with guidance from the facilitator.

Throughout the group discussions a scribe lists relevant information extracted from the information provided, and from the group discussion, under the following three headings:

1) Known Information: A summary of the important facts related to the case.

2) Hypotheses: Possible hypotheses generated from the summarised information and the group discussion.

3) Learning Objectives: During the group discussion you set Learning Objectives, a list of topics/questions, which will require further investigation and later reporting to the group. This is the most important part of the exercise. At the end of the first session for each PBL case the facilitator divides the list of topics/questions among the group. Each student researches a learning topic and the following week presents the information they have researched to their group.

This entire process aims to help you not only improve your understanding of endocrine and reproductive physiology (Specific Learning Outcomes 1 and 2, above) but also addresses outcomes 5, 6 and 7.

4b) PBL presentations – how to minimise your group’s workload!

These PBL presentations will probably occupy the majority of the time away from class that you allocate to the first part of the course. You must keep in mind that you will come away from each PBL session with information from at least 9 other students. PBL content is assessed in the exam and so you need to make sure that you are providing each other with effective study materials. A big part of what makes a good presentation in this context (and this is included in the marking scheme, below) is conciseness. Think about how effective your handout will be as a study guide for the rest of the group. Once it is written, read through it and take out any unnecessary information. At the first PBL session, discuss with your group what rules you want to establish for giving presentations. These rules should be revised after the first round of presentations if necessary. Start with the following basics:

Basic rules for PBL presentations

A strict five minute time limit (shorter if possible – remember that questions take extra time and that you need to get through ~10 presentations in 90 minutes).

1. Limit each presentation to 4 slides.
2. Limit handouts to a maximum of one page of text (diagrams can be extra if necessary).
3. A brief reference list is compulsory. Highlight any references you found particularly informative and which would be useful for the rest of the group to study from.

4c) Assessment Criteria for Problem Based Learning Classes

There are two major components in the assessment of the PBL classes:

- 1) ***Class interaction.*** For these sessions to work well, all members of the group need to participate in the discussion ***to the best of their ability***. The facilitator will assess individuals on their ***participation*** in the group discussion of the topic. This assessment will take into consideration the contribution of the individual to group dynamics e.g. politeness, fairness, respect for the opinions of others, genuine interest in the learning process. If you are not used to working in a group and find this process intimidating, remember that making an effective contribution to the group can be something as simple as taking the initiative to read the information sheet aloud for the rest of the group, or asking somebody to repeat something that you did not understand. This would be regarded as “participated in discussion voluntarily” (see marking scheme below).
- 2) ***Reporting.*** The second part of the assessment involves the reporting back and discussion of the Learning Objectives, which were allocated in the previous session. The emphasis of the assessment of this component is on how you present the information, and your ability to answer questions on your topic.

Marking scheme:

Class Interaction – Assessed by facilitator during session 1 of PBLs 2-4

Standard	Mark (out of 5)	Required Performance
Very Poor	0-1	- no participation in class discussion; not obviously listening to other group members
Poor	2	- minimal participation; only participated in response to direct questioning
Adequate	3	- participated in discussion voluntarily;
Good	4	- voluntarily contributed to the group discussion; provided insightful comments or questions
Very Good	5	- major role in group discussion without dominating the group and still allowing other members of the group to contribute

Reporting – Presentation assessed by facilitator during session 2 of PBLs 2-4

Standard	Mark (out of 10)	Required Performance
Very Poor	0-2	- no research or preparation on allocated topic
Poor	3-4	- inadequate research on the allocated topic - explanation unclear or contains major errors
Adequate	5-7	- adequate research on the topic - mainly accurate information provided, although some errors noted - failure to comply with time limit, slide or handout requirements eg provided too much information
Good	8-9	- topic researched thoroughly - information explained clearly, accurately and concisely - complied with time limit, slide and handout requirements - good understanding of topic and able to answer questions - able to relate their topic to the whole PBL
Very Good	10	- topic researched thoroughly - information explained clearly, accurately and concisely - information presented in an interesting or novel way - complied with time limit, slide and handout requirements - thorough understanding of topic and able to answer questions - able to relate their topic to the whole PBL

4d) Are all four PBLs assessed? How will feedback be given?

We want you to use the first PBL to become familiar with the process of problem based learning and to get to know your group. After this PBL, your tutor will send you your assessment via email along with feedback regarding your participation and presentation. **This mark will not contribute to your final assessment.** The remaining 3 PBLs will be formally assessed and we encourage you to use the continuing feedback from your tutor to improve your participation and presentation skills.

4e) How is problem based learning assessed in the exam?

You are not expected to have an intricate knowledge of all of the material covered during each PBL class for the midsession exam. However you should be able to demonstrate a broad understanding of the learning objectives outlined in each PBL, and be able to describe the physiology underlying each PBL case. In keeping with this, assessment of problem based learning in the exam will be largely by short answer questions, allowing you to demonstrate a broad

understanding of the area, rather than by MCQs, which tend to assess specific aspects of your knowledge. Examples of questions relating to PBL classes in past exams are given at the end of this guide. MCQ questions in the formative assessment and practice exam on topics covered by the PBLs should also guide your learning.

5. ACADEMIC HONESTY AND PLAGIARISM

Students should be aware of UNSW's policy on academic and student misconduct:

<https://my.unsw.edu.au/student/academiclife/assessment/AcademicMisconduct.html>

Plagiarism or failure to acknowledge sources will not be tolerated in submitted work. The University regards this as academic misconduct and imposes severe penalties. Written assignments may be tested for originality against source documents on the Internet and other submitted assignments using the originality detection software Turnitin. Evidence of plagiarism in submitted assignments, etc. will be thoroughly investigated and may be penalised by the award of a score of zero for the assessable work. Flagrant plagiarism will be directly referred to the Division of the Registrar for disciplinary action under UNSW rules.

Students should be familiar with the following:

What is Plagiarism?

Plagiarism is the presentation of the thoughts or work of another as one's own.* Examples include:

- direct duplication of the thoughts or work of another, including by copying material, ideas or concepts from a book, article, report or other written document (whether published or unpublished), composition, artwork, design, drawing, circuitry, computer program or software, web site, Internet, other electronic resource, or another person's assignment without appropriate acknowledgement;
- paraphrasing another person's work with very minor changes keeping the meaning, form and/or progression of ideas of the original;
- piecing together sections of the work of others into a new whole;
- presenting an assessment item as independent work when it has been produced in whole or part in collusion with other people, for example, another student or a tutor; and
- claiming credit for a proportion a work contributed to a group assessment item that is greater than that actually contributed.†

For the purposes of this policy, submitting an assessment item that has already been submitted for academic credit elsewhere may be considered plagiarism.

Knowingly permitting your work to be copied by another student may also be considered to be plagiarism.

Note that an assessment item produced in oral, not written, form, or involving live presentation, may similarly contain plagiarised material.

The inclusion of the thoughts or work of another with attribution appropriate to the academic discipline does *not* amount to plagiarism.

The Learning Centre website is main repository for resources for staff and students on plagiarism and academic honesty. These resources can be located via:

www.lc.unsw.edu.au/plagiarism

The Learning Centre also provides substantial educational written materials, workshops, and tutorials to aid students, for example, in:

- correct referencing practices;
- paraphrasing, summarising, essay writing, and time management;
- appropriate use of, and attribution for, a range of materials including text, images, formulae and concepts.

Individual assistance is available on request from The Learning Centre.

Students are also reminded that careful time management is an important part of study and one of the identified causes of plagiarism is poor time management. Students should allow sufficient time for research, drafting, and the proper referencing of sources in preparing all assessment items.

* Based on that proposed to the University of Newcastle by the St James Ethics Centre. Used with kind permission from the University of Newcastle

† Adapted with kind permission from the University of Melbourne.

6. COURSE SCHEDULE AND ATTENDANCE REQUIREMENTS

The course timetable is attached at the end of these notes and can also be found on Blackboard. You are expected to attend all rostered activities for their full duration.

Several attendance requirements warrant special mention:

Problem based learning tutorials. PBLs form a major part of your learning for the Endocrinology and Reproductive components of this course. You are relying on other members of your group to attend all sessions, carry out the necessary research and report back to the group, and they are relying on you to do the same. For both of these reasons attendance at all PBL sessions is compulsory. Non attendance for other than documented medical or other serious reasons, or unsatisfactory performance, will result in an additional assessment exam or in ineligibility to pass the course.

Practical class ‘Gestational Diabetes and Screening in Pregnancy.’ Attendance is compulsory at this class. The class involves the use of human subjects and has been considered and approved by the university’s Committee on Experimental Procedures Involving Human Subjects. Each student must read the details of this experiment carefully before embarking on it, and is required to raise any matters of concern with the person in charge of the class before the experiment has begun. You are expected to behave in a professional manner in this class and demonstrate respect for your colleagues during any experiment involving human subjects. Students volunteering to act as subjects will be required to sign witnessed informed consent forms. These will be distributed and collected in the practical class.

The neonatal intensive care visit. Some students will have the opportunity to visit the Newborn Care Centre at the Royal Hospital for Women, Randwick, in practical sessions in weeks 9-11. Students will sign up to attend these classes on Blackboard. Unfortunately the hospital cannot accommodate all students. Students who are able to attend must appreciate that this is a tremendous privilege, and that there may be family members there for whom this is a very stressful time. Please dress appropriately, behave in a professional, respectful manner at all times, and follow any instructions given to you by hospital staff. It is essential that you wear closed in shoes or you will not be permitted into Newborn Care Unit. The hospital staff are spending considerable time and effort to offer you this opportunity and if you volunteer to attend this class your attendance is compulsory.

Two peas in a pod. Held concurrently with the neonatal intensive care visits. Your attendance and participation is essential.

Presentation preparation time. Time has been allocated during at least one of the practical class sessions in weeks 9-11 to allow you to work on your presentation. You encouraged to use this time to get together with other group members to ensure that your presentation forms a cohesive whole.

7. RESOURCES FOR STUDENTS

7a) Textbooks

There are no prescribed texts for this course. Ganong's '*Review of Medical Physiology*' provides a very good coverage for the endocrine component of the course, while Harding & Bocking '*Fetal Growth and Development*' is an excellent reference for developmental physiology. The others are more specialist textbooks which are held in the UNSW library and could be consulted as a reference if necessary.

NOTE: Ganong's 'Review of Medical Physiology' is available as an online text through the UNSW library catalogue. Copies of all other texts have been placed in the MyCourse (Reserve) collection of the UNSW library.

- Ganong, WF. *Review of Medical Physiology*. 23rd edition, 2010. Lange.
- Harding, R and Bocking, AD (eds). *Fetal Growth and Development*. Cambridge UP.
- Laycock, J & Wise, P. *Essential Endocrinology*. Oxford UP.
- Griffin, JE & Ojeda, SR (eds). *Textbook of Endocrine Physiology*. Oxford UP.
- Thorburn, G & Harding, R. *Textbook of Fetal Physiology*. Oxford UP.
- Nathanielsz, PW. *Life Before Birth and a Time to be Born*. Prometheus Press.

7b) Other Resources

- The learning activities may involve supplementary reference articles and printed lecture notes.
- For the PBLs you may find Harrison's online (a medical database, the online version of Harrison's Principles of Internal Medicine) and the Oxford Textbook of Medicine (electronic resource) useful resources. These can be accessed via the UNSW library catalogue.
- McPhee, SJ, Vishwanath, RL, Ganong, WF. *Pathophysiology of Disease: an Introduction to Clinical Medicine*. 4th Edition. In MyCourse (Reserve), UNSW library. This is likely to be helpful for the PBLs and the Endocrinology Assignment.
- **Blackboard:** Lecture notes, course-related material such as timetables and outlines, as well as supplementary articles may be placed on Blackboard. Marks for assessment tasks will also be posted here. Announcements will be made via Blackboard and it is your responsibility to regularly check this site.
- **Imprinting film.** Prior to attending the lecture on Epigenetics in week 10 it is strongly recommended that you view the video "The ghost in your genes" as this will help you to understand this lecture. This video is available on UNSWTV. To access it, go to the UNSW homepage. Click on "More videos". Click on All UNSWTV Videos". Scroll down to the Faculty of Medicine and click on School of Medical Sciences. The video is called 'The ghost in your genes'. You will need to use your Student ID and zpass to access the video. The video lasts approximately 50 min.

8. CONTINUAL COURSE IMPROVEMENT

8a) CATEI

Changes are continuously being made to this course to keep it current and to make it a worthwhile experience for you. Most years evaluative feedback is sought from students using UNSW's Course and Teaching Evaluation and Improvement (CATEI) Process. Your feedback is taken seriously, and the improvements that are made to the course are based in part on such feedback. In recent years many students made the comment that although they very much enjoyed and valued the PBL classes, they felt that the workload involved was too large compared with what was expected from other courses. We reduced the number of PBL classes from 5 to 4, partly in light of this feedback. In response to students requests for more feedback to help with their learning, PBL facilitators email students individually to provide feedback on their presentations and class participation and two formative assessment tools have been produced. This feedback has been positively received by students and will continue in 2012. In 2011, the practical class component of the course was changed and a new class (*Gestational diabetes and screening in pregnancy*) was introduced. As well, an oral presentation was substituted for the previous poster presentation in the Assessment Tasks. These changes will be maintained in 2012.

8b) Student panel

While individual students are welcome to provide feedback to the course convenor, your views regarding the course can also be put forward by a small panel of student representatives. These representatives will have the opportunity to meet with the course convenor during session to provide feedback on the course structure, learning activities and staff. This will enable you to make your views known while the course is running, as opposed to at the end of the course (which is a disadvantage of CATEI evaluation).

9. GENERAL INFORMATION

The Department of Physiology in the School of Medical Sciences is located primarily on the 2nd and 3rd floors of the Wallace Wurth building and is within the School of Medical Sciences, Faculty of Medicine.

The SOMS Student Advisor, **Ms Carmen Robinson** (Carmen.Robinson@unsw.edu.au, ph: 9385 2464, G27 Biosceinces Building), is able to provide additional information on any courses offered by the School.

Professor Gary Housley is Head of Department and appointments may be made directly with him (g.housley@unsw.edu.au or phone 9385 1057).

SCHOOL OF MEDICAL SCIENCES HONOURS PROGRAM

There is an Honours program conducted by the School. This program is coordinated by Dr Patsie Polly (patsie.polly@unsw.edu.au, Room 508 WW, ph: 9385 2924). Any students considering an Honours year should discuss the requirements with Dr Polly. Outstanding students may be considered for scholarships offered annually by the University and School.

POSTGRADUATE RESEARCH DEGREES

The Department offers students the opportunity to enter into the following graduate programs:

Doctorate (PhD): For further information contact the coordinator, Dr Pascal Carrive (p.carrive@unsw.edu.au).

SUMMER RESEARCH AWARDS

The School of Medical Sciences offers several Summer Research awards most years to enable good students to undertake short research projects within the school. Most years preference is given to students currently in their first or second year. For further details see the following webpage.

<http://notes.med.unsw.edu.au/SOMSWeb.nsf/page/Summer+Research+Awards>

HEALTH AND SAFETY AND BEHAVIOUR IN PRACTICAL CLASSES

New Work Health and Safety Legislation commenced 1st January 2012. Many of the changes relate to the nationalisation of Health and Safety in Australia and will be gradually introduced into the school's practical classes. Covered shoes are compulsory in all practical classes. Students must take due care with biological and hazardous material and make sure all equipment is left clean and functional. Student risk assessments are provided with the practical class notes and students need to sign these prior to commencing the class. Please note that photography of experiments involving either animal or human subjects is not permitted under UNSW Ethics committee guidelines.

CONSENT FORMS

Practical classes involving your participation as a subject require you to sign a witnessed, informed consent form.

OFFICIAL COMMUNICATION BY EMAIL

Students are advised that email is the official means by which the School of Medical Sciences at UNSW will communicate with you. All email messages will be sent to your official UNSW email address (e.g., z1234567@student.unsw.edu.au). If you do not wish to use the University email system, you **MUST** arrange for your official email to be forwarded to your chosen address. The University recommends that you check your email at least every other day. Facilities for checking email are available in the University Library. Further information and assistance is available from UNSW IT Services, 9385 1333. Free email courses are run by the UNSW Library.

UNSW Blackboard

To access UNSW Blackboard go to:

<http://telt.unsw.edu.au/>

Click on Login to UNSW Blackboard then log on using your zPass Username and Password (zStudentNo and password) and select the course PHSL3221. You should have access to it if you are properly enrolled.

System Requirement for BBL:

UNSW Blackboard supports the following web browsers for Windows XP or VISTA.

- Internet Explorer (IE) version 7 or 9
- Firefox 3.0x (must run version 3.0.3 and above)

UNSW Blackboard supports the following web browsers for Mac 10.4 or 10.5 (Mac OS 10.3 is not supported)

- Firefox 3.0.x(must run version 3.0.3 and above)
- Safari 2 or 3

Firefox is the preferred browser in both PC & Mac environment.

HANDWRITING

Students whose writing is difficult to understand will disadvantage themselves in their written assessment. Make every effort to write clearly and legibly. Do not use your own abbreviations.

APPLICATIONS FOR SPECIAL CONSIDERATION

Students who miss an assessment through sickness or misadventure, or believe that their performance has been adversely affected by sickness, misadventure or other circumstances beyond their control, must submit an application to UNSW Student Central for special consideration within **three working days** of the assessment to which it refers. The application must be made via Online Services in MyUNSW. Full details for the application (e.g., Medical Certificate, etc.) are available at

<https://my.unsw.edu.au/student/atoz/SpecialConsideration.html>

You should also contact the course convenor to inform her that you have applied for special consideration.

MISSED EXAMS

If in any circumstances you unavoidably miss an examination, you must inform the Registrar and also contact the relevant course authority immediately. Normally, if you miss an exam (without medical reasons) you will be given an absent fail. If you arrive late for an exam, no time extension will be granted. It is your responsibility to check timetables and ensure that you arrive with sufficient time.

DEFERRED EXAMS

If you miss an exam for medical reasons you must supply adequate documentation (including a medical certificate) to UNSW Student Central within 3 working days of the date of the exam. Your request for consideration will then be assessed and a deferred exam may be granted. You cannot assume you will be granted supplementary assessment and it is policy in the Dept of Physiology to not grant supplementary exams except in very exceptional circumstances. It is intended that supplementary exams for the School of Medical Sciences in Semester 2, 2012 will be held in the week commencing Monday 26th November, 2012. Supplementary exams may include a significant oral element.

MEDICAL CERTIFICATES

Students who miss classes due to illness or for other reasons must submit a copy of medical certificates or other acceptable documentation to Dr Gibson. **Certificates should be lodged no more than 7 days after an absence. Certificates lodged after 7 days will not be accepted.** The following details must be attached:

Name, Student number, Course number, Date of the class, Name of class/es missed.

STUDENT RIGHTS AND RESPONSIBILITIES

Refer to

<https://my.unsw.edu.au/student/resources/Policies.html#StudentResponsibilities&Conduct>

STUDENT SUPPORT SERVICES

Those students who have a disability that requires some adjustment in their teaching or learning environment are encouraged to discuss their study needs with the course convenor prior to, or at the commencement of, their course, or with the Equity Officer (Disability) in the Equity and Diversity Unit (9385 4734 or <http://www.studentequity.unsw.edu.au/>).

Issues to be discussed may include access to materials, signers or note-takers, the provision of services and additional exam and assessment arrangements. Early notification is essential to enable any necessary adjustments to be made.

APPEAL PROCEDURES

Refer to

<https://my.unsw.edu.au/student/academiclife/assessment/academicstandinghowtoappeal.html>

GRIEVANCE OFFICER

In case you have any problems or grievance about the course, you should try to resolve it with the Course Convenor. If the grievance cannot be resolved in this way, you should contact the Head of Department, Prof Gary Housley, or the School's Grievance Officer, Dr Priti Pandey (p.pandey@unsw.edu.au, 9385 2483).

10. ENDOCRINOLOGY ASSIGNMENT

Task Description

Each of the 3 cases below describes a patient with an endocrine disorder. Choose **one** case and write a report about the patient's endocrine disorder.

In your report you should include:

- (1) a description of the biosynthesis of the hormone(s) involved (4 marks)
- (2) a description of the normal mechanisms which control secretion of the hormone(s) involved (4 marks)
- (3) an explanation of the mechanisms underlying the patient's symptoms, signs and test results (8 marks)
- (4) a brief explanation of possible causes/etiology of the disease (2 marks)
- (5) a brief explanation of possible treatments (2 marks).

Your report should be 2000 words (excluding references, figures and tables), and be properly referenced with in text references and a reference list.

You must submit a paper copy of your assignment to the BSB student office (Room G27 Biological Sciences Building) by the due date and time. Please attach a completed Assessment Cover sheet (available on Blackboard) to your assignment before you submit it.

Due date: 10 am Monday 17th September (Week 9).

A penalty will be applied for late submission.

Assessment Criteria

You will be assessed on:

- the scientific content of your report
- how well you have communicated your ideas (use of clear, simple, grammatical language; clear explanations; logical structure; appropriate language; effective use of illustrations where appropriate)
- evidence of critical thinking (discussion of inconsistencies in the literature; use of logical argument)
- whether your report is appropriately referenced
- your choice of sources (range, quality, relevance)

Marks will be deducted for exceeding the word limit.

CASE 1

A 20 year old woman presents to her doctor with increased urinary frequency. Beginning about a month previously she had noticed that she was waking up a couple of times a night to pass urine. More recently she noticed that she was also passing urine more frequently during the day, sometimes as often as once an hour.

Her mother had suggested that this increased frequency might have been due to her high caffeine consumption. However, for the past week she had limited herself to one cup of coffee per day, but still found that her urinary frequency continued. In addition she found that she was always thirsty. She had started carrying a large water bottle with her and re-filling it several times a day. She had also noticed that the urine she passed was almost colourless, rather than yellow.

On physical examination the doctor found no abnormalities.

Blood and urine tests were ordered which showed:

- Plasma sodium concentration 149 mmol/L (reference range 136-145 mmol/l)
- Plasma osmolality 308 mOsm/kg (reference range 285-295 mOsm/kg)
- Fasting plasma glucose 5 mmol/l (reference range 4.2-6.4 mmol/l)
- Urinary osmolality 200 mOsm/kg.
- Urinary glucose - negative.

Further questioning revealed that no other family members had ever displayed these symptoms. There was no history of traumatic head injury. An MRI of her brain was normal.

A two-hour water deprivation test was performed. After two hours of not being able to drink water, the osmolality of her plasma and urine were measured a second time. Her urinary osmolality remained at ~ 200 mOsm/kg, but her plasma osmolality increased to 315 mOsm/kg. She was then injected with a drug called DDAVP. One hour after the injection, the osmolality of her plasma decreased to 290 mOsm/kg and the osmolality of her urine increased to 425 mOsm/kg.

The diagnosis of idiopathic pituitary diabetes insipidus was made.

CASE 2

A 60 year old man with a history of hypertension and non-insulin dependent diabetes mellitus, presented to his doctor because, although normally an active man, he was finding that his muscles were weak and he was tiring more easily. On examination, his diastolic pressure was more elevated than usual but no other abnormalities were detected. A blood test was ordered which indicated that his potassium level was 2.8 mmol/l (reference range 3.3-4.7 mmol/l).

As the man was taking frusemide (a potassium-wasting diuretic drug) to treat his hypertension, it was initially considered that this drug was the likely cause of the hypokalaemia. Consequently frusemide was discontinued, and the man was commenced on oral potassium supplementation.

A week later, the man had further blood tests which showed:

- Plasma potassium 2.7 mmol/l (reference range 3.3-4.7 mmol/l)
- Plasma sodium 144 mmol/l (reference range 137-145 mmol/l)
- Plasma chloride, magnesium, bicarbonate and pH were all within normal limits.
- Red blood cell and white cell counts were normal.

In view of the persistent hypokalaemia, several hormone assays were performed with blood sampled at 9.30 am, after he had been seated for one hour.

- Upright plasma aldosterone concentration 38 ng/dl (reference range 4-31 ng/dl)
- Upright plasma renin activity - 0.4 ng/ml/h
- Plasma aldosterone concentration to plasma renin activity ratio – 95 ng/dl per ng/ml/h (a ratio > 30 is strongly suggestive of autonomy of aldosterone secretion).

Primary hyperaldosteronism was confirmed by an acute intravenous isotonic saline load test. Pre and post infusion aldosterone levels were 35 and 17 ng/dl, respectively (maximum acceptable level after infusion = 5 ng/dl).

A high resolution abdominal CT scan was performed which demonstrated enlargement of the left adrenal gland and one cortical nodule approximately 1.5 cm in diameter. A diagnosis of Conn's syndrome was made and the patient was scheduled for surgery.

CASE 3

A 37-year-old man presented to the emergency department with a five-week history of nausea, vomiting and weakness. He said that he did not weigh himself routinely, but he felt that he had lost weight because his clothes were looser and he had needed to get an extra hole in his belt so that his jeans did not fall down. He had seen his general practitioner on a couple of occasions for symptoms of fatigue, nausea and anorexia. Because of the gastrointestinal nature of his symptoms, he had been treated with cimetidine and antacids, without improvement. More recently he found he was craving salt.

On physical examination, the man looked unwell. His blood pressure was 100/47 mmHg while he was lying down but fell to 70/30 mmHg when he stood up. There were areas of blue/black discolouration on his gums, and he appeared to be tanned in patches over pressure areas on his knees and elbows. Physical examination was otherwise normal.

Laboratory results were as follows:

Plasma potassium 5.8 mmol/l (reference range 3.3-4.7 mmol/l)

Plasma sodium 127 mmol/l (reference range 136-145 mmol/l)

Morning cortisol level 69 nmol/L (reference range 138 to 635 nmol/L).

Plasma ACTH level was 54.8 pmol/L (reference range 2.0 to 11.5 pmol/L).

A screening test for adrenal function was performed.

Plasma cortisol levels at 30, 60 and 90 minutes after injection of cosyntropin (250 µg) were 72 nmol/L, 74 nmol/L and 55 nmol/L respectively.

At 90 minutes, the plasma aldosterone level was less than 28 pmol/L (the normal incremental increase is >111 pmol/L).

A CT scan showed a severe reduction in the size of the adrenal glands bilaterally. His chest X ray was normal, except that the heart size seemed rather small. The tuberculin skin test was negative. His blood contained autoantibodies against 21 hydroxylase.

A diagnosis of Addison's disease was made and steroid replacement therapy with hydrocortisone and fludrocortisone acetate was begun.

11. PRACTICAL CLASS NOTES – GESTATIONAL DIABETES MELLITUS AND SCREENING IN PREGNANCY

Physiology Teaching Laboratory Student Risk Assessment	 UNSW <small>THE UNIVERSITY OF NEW SOUTH WALES</small>	PHSL 3221 Endocrine, Reproductive & Developmental Physiology: Gestational Diabetes Mellitus and Screening in Pregnancy <small>DOC:PHSLSRA-29</small>
---	---	--

Hazards	Risks	Controls
Biohazard: Blood Sharps hazard: lancets Drink: 75g glucose solution	Infection Cuts and infection High blood sugar levels (Hyperglycaemia)	Students are informed of the risks. Students must wear lab coats and gloves. All students acting as subjects must be able to satisfy the list of exclusions from donating blood similar to that used by the Red Cross Blood Transfusion Service (listed on the Participant Information Statement and Consent Form, attached). Participants are required to sign a consent form. Subjects are to collect and analyse their own blood, and to cover the blood sample site with a Band Aid once each blood has been taken. All contaminated tissues, swabs, Band Aids and test strips go into the biohazard bins provided on each bench. In case of spills, notify a demonstrator who will wipe it with 1% Virkon. (SWP-GEN-04). Sterile disposable lancets are provided. Students are instructed to dispose of the lancets immediately after use into the sharps containers provided. Under no circumstances are lancets to be re-sheathed or re-used. If the student is feeling unwell, or the fasting blood glucose level is 7.0 mmol/l or above, the student is not allowed to be a subject in this class. A registered medical practitioner is available throughout the duration of the practical class.

Personal Protective Equipment			
 <div style="background-color: blue; color: white; padding: 2px; width: fit-content; margin: 0 auto;">Closed in Footwear</div>	 <div style="background-color: blue; color: white; padding: 2px; width: fit-content; margin: 0 auto;">Lab. Coat</div>	 <div style="background-color: blue; color: white; padding: 2px; width: fit-content; margin: 0 auto;">Gloves</div>	

Emergency Procedures
In the event that the emergency alarm sounds, stop the experiment. Remove your lab coat and wash your hands Pack up your bags. Follow the instructions of the demonstrators. If blood comes into contact with the body use the emergency shower/eye wash. In case of all other injuries, alert a demonstrator who will call a first aider.

Clean up and waste disposal
Dispose of the lancets IMMEDIATELY after use, into the sharps container. Dispose of all contaminated plastic swabs and test strips into the biological waste bins. NEVER THROW THESE INTO THE GENERAL WASTE BINS. Place all gloves in the biological waste bags.

Remove your lab coat and wash your hands thoroughly.

Ethics Approval

This practical has been considered and approved by the University's Committee on Experimental Procedures Involving Human Subjects (HREC 11329).

Declaration

I have read and understand the safety requirements for this practical class and I will observe these requirements.

Signature:.....Date:.....

PRAC#PHSL-GDM...relates to **RA-PHSL-29** Related documents (SWP's/RA) ...**SWP-GEN-04**

GESTATIONAL DIABETES MELLITUS AND SCREENING IN PREGNANCY

Learning Objectives

- To introduce the concept of glucose tolerance testing and demonstrate the changes in blood glucose levels that occur following consumption of an oral glucose load.
- To examine how and why glycaemic control changes in pregnancy, and how this predisposes pregnant women to gestational diabetes.
- To explore the general principles of screening, and how screening is used in pregnancy.

INTRODUCTION

Gestational diabetes mellitus affects at least 1 in 20 pregnant women in Australia, and is a serious condition with consequences both for the mother and her developing fetus. Many countries including Australia have routine screening for gestational diabetes, followed by aggressive management once it is diagnosed. In this class you will learn about this screening program, and undergo the final diagnostic test for gestational diabetes, the oral glucose tolerance test.

We will also discuss the general principles of screening and screening tests. There are many conditions screened for in pregnancy; we will look at what conditions are screened for in pregnancy and consider the general principles underlying screening for these conditions.

1. 75g ORAL GLUCOSE TOLERANCE TEST (75 g OGTT)

Detecting diabetes

The 75g oral glucose tolerance test is a standard test used in the diagnosis of gestational diabetes, and also Type 2 diabetes mellitus in nonpregnant individuals. A morning fasting blood sample is taken, and then a standard solution containing 75g glucose is consumed over no more than 5 minutes. Blood samples are taken 1h and 2h after the glucose load is administered, and analysed for glucose concentration. In some clinical situations insulin levels are also measured.

In **nonpregnant individuals**, type 2 diabetes is diagnosed if the fasting plasma glucose level is ≥ 7.0 mmol/L, or if the level at 2 hours post glucose load is ≥ 11.1 mmol/L. Impaired glucose tolerance is indicated by a 2 hour level of 7.8-11 mmol/L. (Note that for proper diagnostic purposes the blood samples need to be venous; in today's class we will be using finger prick samples which are not as reliable but simpler to perform.) Type 2 diabetes may also be diagnosed if a random (i.e. any time of day, subject not fasted) glucose level is ≥ 11.1 mmol/L.

In **pregnant women**, diagnosis of gestational diabetes is slightly more complicated. Pregnant women in Australia commonly undergo screening for gestational diabetes between 26-28 weeks LMP using an **oral glucose challenge test**. In this test, a 50g oral glucose load is given and a single blood sample is taken 1 hour later. Women are not fasted. Glucose levels ≥ 7.8 mmol/L at 1 hour indicate a positive test, and the woman is referred for a 75g OGTT as a diagnostic test. Gestational diabetes is diagnosed if the fasting glucose is ≥ 5.5 mmol/L, or if the 2 hour level is ≥ 8.0 mmol/L (≥ 9.0 mmol/L in New Zealand). **Note the much stricter cutoffs for a 75g OGTT in pregnancy – by the end of the class you should understand why this is the case. We will also look at the reason for this two-step detection process later in the class.** Many primary care-givers will send women directly for a 75g OGTT if they have reason to suspect gestational diabetes.

Safety in Class

To ensure a safe working environment for yourself and others, you must observe the following safety rules:

- Wear a lab coat and closed shoes (subjects are to remove their lab coats and wash their hands before drinking the glucose load).
- The glucose load should be drunk at the table set up for this purpose. Subjects are then to return to and remain at their bench for the remainder of the class.
- Students are to collect and analyse their own blood. All blood work must be done over the bench roll.
- Avoid contact with blood; open cuts or unhealed wounds must be covered. Remember all blood should be regarded as potentially infectious at all times. Wear disposable gloves if handling blood other than your own. If there is contact with blood wash the hands and other bodily parts in contact with or splashed by blood. Thorough washing with soap and water is adequate.
- Wipe down benches, equipment or other bloodied areas with cold tap water and then with 0.05% sodium hypochlorite.
- Lancets used in this class for finger prick samples are single use only. They must be placed into a sharps container as soon as they have been used. Never attempt to use a disposable lancet that has had the tip removed or the button depressed. This lancet will not work, and if it has been used already by another person it could be contaminated.
- Subjects must cover the puncture site with a Band Aid following each blood sample.
- All used test strips, swabs, tissues, bench roll, used Band Aids, gloves and any other non-sharp contaminated waste material are disposed into biohazard plastic bags.

Subjects

Volunteer subjects in this class will drink a 75g glucose solution and will sample their blood by finger prick (single use lancet) and analyse it for glucose concentration. Before agreeing to be a subject, students must read the Participant Information Statement and sign the consent form. You can only be a subject if you can answer 'no' to all of the exclusion criteria listed in the Participant Information Statement, a copy of which is provided in the appendix. As well, on the day of the class, if you are feeling unwell, or have a fasting glucose level of 7.0 mM or higher, you **cannot** be a subject.

Information regarding this practical will be provided to you prior to the class. You will need to organise yourselves into groups of 4-5 and have chosen a subject by at least the day before the class. This is because the **subjects need to be fasted**.

IMPORTANT:

1. Subjects need to fast prior to the test:

- Fast after midnight for a morning class.
- Fast after 9.00 am for an afternoon class.

If the class is in the morning, do not eat anything after midnight of the night before the class. Do not eat breakfast. Drink as much water as you wish.

If the class is in the afternoon, eat a light breakfast that is low in fat. Do not eat anything after 9.00 am. Drink as much water as you wish.

2. Subjects need to minimise activity on the day of the class.

Experimental Protocol

Three capillary blood samples will be taken by finger prick during this class in order to measure blood glucose concentrations: a fasting blood sample, and samples 60 min and 120 min after drinking a solution containing 75g glucose.

Ensure that the glucose meter and test strip are ready for use before preparing to take each blood sample.

To obtain a capillary blood sample by finger prick:

Your results will only be as good as the quality of your samples. For accurate results, it is important to follow these steps:

Use a different finger for each of your blood samples. Increase blood flow to the fingers (e.g. by putting the hand in warm water, massaging fingers, rubbing hands together). Thoroughly clean the skin on your hands by washing with warm water and soap. Dry hands thoroughly, then swab the end of a finger with an ethanol swab and allow it to dry. You can sample from the side of the finger (see Figure 1), or from the pulp. Don't sample from the very tips of the fingers as they are very sensitive and it will hurt!

Remove the end-tip from the single use lancet by twisting and pulling, place end firmly against the skin, and press the release button to pierce the skin. Allow a large droplet of blood to accumulate. It may be necessary to massage the finger gently towards the finger to get an adequate sample, but avoid squeezing the finger too hard.



Transfer the droplet of blood onto the test strip, and record the glucose concentration shown on the glucose meter in Table 1. Cover the sampling site with a tissue or swab and apply pressure to stop any further bleeding. Cover the site with a Band Aid.

Figure 1. From Canterbury Health Laboratories.

http://www.cdhb.govt.nz/ch_labs/cap_collects_how_to.htm. Downloaded 9 April 2007.

Glucose load

As soon as the fasting blood glucose concentration has been determined, subjects should wash their hands, then drink the 75g glucose test solution provided. Do this evenly over a 5 min period, and record the time at the end of this period as 'time 0'. Wash hands thoroughly after the glucose load to remove any glucose that may be on the skin and would contaminate any further measurements.

Important: For the following 2 hours, subjects cannot eat, drink or smoke, and must remain at their bench, keeping their activity levels to a minimum.

Take and analyse blood samples at 60 and 120 minutes after the glucose load was consumed.

Record your results in the table provided and in the central class data sheet. Make sure that you have a record of all class results before leaving the practical class.

Use the time available during this 2 hour test to complete the following activities.

Table 1. Blood glucose concentrations during baseline and following a 75g glucose load.

SUBJECT	BLOOD GLUCOSE CONCENTRATION (mmol/L)		
	Fasting	1 hour	2 hour
1			
2			
3			
4			
5			
6			
7			
8			
9			
10			

SUBJECT	BLOOD GLUCOSE CONCENTRATION (mmol/L)		
	Fasting	1 hour	2 hour
11			
12			
13			
14			
15			
16			
17			
18			
19			
20			

2. GESTATIONAL DIABETES MELLITUS RESEARCH AND DISCUSSION

This part of the class will provide you with an understanding of gestational diabetes mellitus. In small groups, you will research one of the questions below and then present your findings to the rest of the class. Keep your answers very brief (5 minutes maximum) – a general overview is all that is required here.

Research questions

1. What are the mechanisms underlying gestational diabetes (i.e. what happens to glucose homeostasis during normal pregnancy and how does this go wrong in GDM)?
2. Why are there different cutoffs for a 75g OGTT in pregnant and nonpregnant people? Why wait until more than half way through the pregnancy to screen for GDM?
3. Does anything predispose a woman to GDM?
4. How is GDM treated?
5. What are the consequences of gestational diabetes in the short term (for mother and fetus/newborn)?
6. Are there any long term consequences for the offspring of a diabetic pregnancy?
7. Are there any long term implications for the mother (will she remain diabetic after the pregnancy? Does she have a greater chance of developing diabetes later in life? etc).

3. SCREENING IN PREGNANCY

Gestational diabetes is just one of many conditions and abnormalities that are screened for during pregnancy. In this part of the class we will examine the concept of screening in general, look at the antenatal screening program commonly followed in Australia and use a worked example of the screening program for gestational diabetes to illustrate the compromises that must be made when designing a screening test.

Discussion Questions

1. What is screening?
2. What are the basic principles underlying an effective screening program?
3. What other routine screening tests are carried out in pregnancy?
4. What are some of the advantages and disadvantages of screening in pregnancy?
5. What are some important features of a good screening test?

Sensitivity and specificity

Most screening and diagnostic tests are not perfect. They can wrongly designate a healthy person as having a disease (this is called a false positive), and can miss some cases who actually do have the condition (false negatives; Table 2).

Table 2.

	Has the disease	Does not have the disease
Positive test	True positive	False positive
Negative test	False negative	True negative

The following test characteristics look at various aspects of this problem.

Sensitivity measures the proportion of actual positive cases (i.e. people who have the disease) who are correctly identified as such. In this case, the sensitivity of a glucose challenge test is the percentage of all women who have GDM who are correctly identified as having GDM.

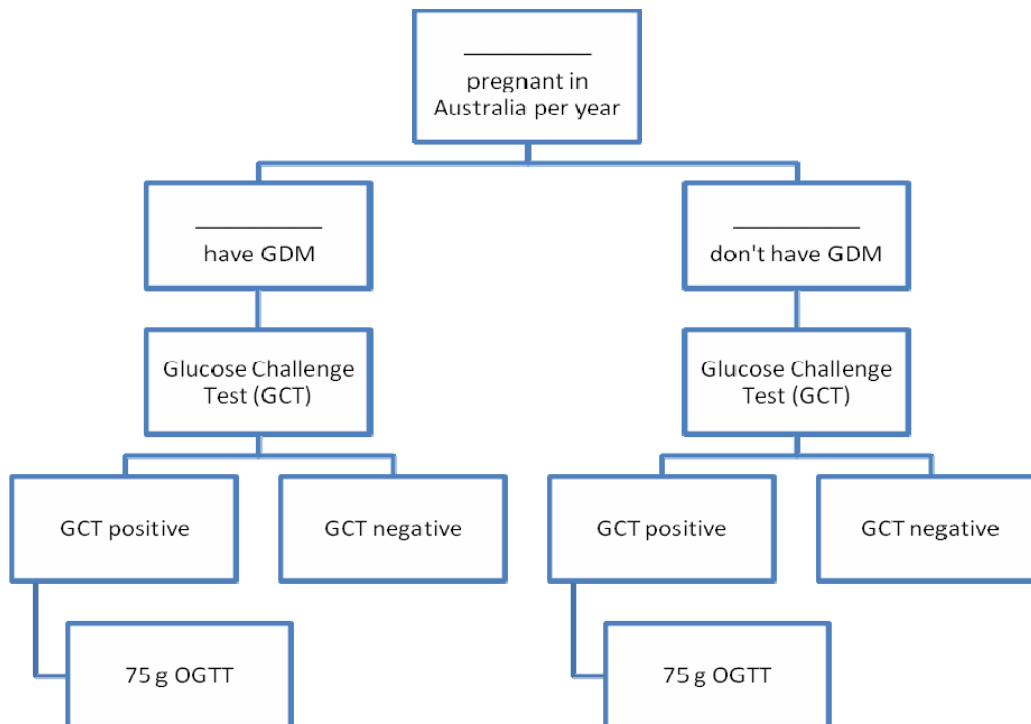
$$\begin{aligned}\text{Sensitivity} &= \text{true positives} / \text{all who have the condition} \times 100\% \\ &= \text{TP} / (\text{TP} + \text{FN}) \times 100\%\end{aligned}$$

Specificity measures the proportion of people who don't have the disease that are correctly identified as negative. In this case, the specificity of the glucose challenge test is the percentage of all women who do not have GDM that are correctly identified as not having the condition.

$$\begin{aligned}\text{Specificity} &= \text{true negatives} / \text{all who don't have the condition} \times 100\% \\ &= \text{TN} / (\text{TN} + \text{FP}) \times 100\%\end{aligned}$$

Screening for gestational diabetes – a worked example

There are roughly 300 000 births in Australia each year. Approximately 4.6% of these pregnancies will be complicated with gestational diabetes mellitus (GDM) (Templeton & Pieris-Caldwell 2008. *Gestational diabetes mellitus in Australia, 2005-06*. Cat. no. CVD 44. Canberra: AIHW). Assuming that the screening test for GDM (the 50g oral glucose challenge test, GCT) has a sensitivity of 83% and a specificity of 75%, answer the questions below.



1. Where do the true and false positives and negatives sit on this chart? Calculate the number of women that fall into each of these 4 categories.
2. What is the likelihood that a woman has gestational diabetes if she tests positive on a glucose challenge test?
3. What is the likelihood that a negative result for the glucose challenge test will be correct?
4. How many pregnant women will be unnecessarily subjected to a 75 g OGTT each year?
5. How many women who have gestational diabetes will be missed by the screen?
6. How would the sensitivity and specificity of the glucose challenge test change if a higher glucose cutoff were used?



PARTICIPANT INFORMATION STATEMENT AND CONSENT FORM

Practical class – Gestational Diabetes Mellitus and Screening in Pregnancy

As an enrolled student you are invited to participate in a practical class that investigates the screening and diagnosis of gestational diabetes mellitus. If you decide to participate, you will undergo an oral 75g glucose tolerance test, which is a standard diagnostic test for both gestational diabetes and for type 2 diabetes mellitus. You will measure your blood glucose levels before and after you have consumed a glucose drink (75g glucose in 300 ml of carbonated water). Glucose levels will be analysed in droplets of your blood obtained by finger prick. Three samples of blood will be taken in total. The duration of the class is 3 hours.

You will need to fast before the class. For a morning class, this involves not eating anything after midnight. If the class is in the afternoon, you should eat a light, low-fat breakfast and then not eat anything after 9.00 am. You may drink as much water as you wish while you are fasting. You are also asked to minimise activity on the day of the class.

Participation in this class will involve the following discomforts: hunger due to fasting, transient stinging associated with finger prick.

This class involves limited risks, and the following precautions must be taken to prevent the spread of infection:

- Wear a lab coat, closed shoes and disposable gloves.
- Avoid contact with blood; open cuts or unhealed wounds must be covered. Remember all blood should be regarded as potentially infectious at all times. If there is contact with blood wash the hands and other bodily parts in contact with or splashed by blood. Thorough washing with soap and water is adequate.
- After ingestion of the glucose load, subjects are to remain at their bench for the remainder of the class.
- Subjects are to collect and analyse their own blood, and must cover the puncture site with a Band Aid following each blood sample.
- Lancets used for finger prick samples are single use only and must be placed into a sharps container as soon as they have been used; never attempt to use a disposable lancet that has had the tip removed or the button depressed.
- All non-sharp waste material is placed into biohazard plastic bags which are sealed carefully by laboratory staff for disposal and incineration.
- Wipe down benches, equipment or other bloodied areas with cold tap water and then with 0.05% sodium hypochlorite.
- The exclusion criteria for subjects donating blood are similar to that of the Red Cross Blood Transfusion Service and are given below.

You may only be a volunteer for this class if you can answer “NO” to all of the following:

TO THE BEST OF YOUR KNOWLEDGE, HAVE YOU:

1. In the last 6 months, had an illness with swollen glands and a rash, with or without a fever?
2. Ever thought you could be infected with HIV or have AIDS?
3. Ever “used drugs” by injection or been injected, even once, with drugs not prescribed by a doctor or dentist?
4. Ever had treatment with clotting factors such as Factor VIII or Factor IX?
5. Ever had a test which showed you had hepatitis, HIV or human T cell lymphotropic virus (HTLV)?
6. In the last 12 months, engaged in sexual activity with someone you might think would answer “yes” to any of the questions above?

THE UNIVERSITY OF NEW SOUTH WALES

PARTICIPANT INFORMATION STATEMENT AND CONSENT FORM (continued)
Practical class – Gestational Diabetes Mellitus and Screening in Pregnancy

Have you ever:

7. Had male to male sex?
8. Had sexual activity with a male who you think might be bisexual?
9. Been a male or female sex worker?
10. Engaged in sexual activity with a male or female sex worker?
11. Been injured with a used needle (needlestick)?
12. Had a blood/body fluid splash to eyes, mouth, nose, or broken skin?
13. Had a tattoo (including cosmetic tattooing), skin piercing, electrolysis or acupuncture?
14. Been imprisoned in a prison or lock-up?
15. Had a blood transfusion?
16. Had (yellow) jaundice or hepatitis or been in contact with someone who has?
17. Had a sexually transmitted disease e.g. syphilis, gonorrhoea or herpes?.
18. Received a tissue transplant or graft (organ, cornea, etc.)?
19. Had malaria, Ross River fever, Q fever, leptospirosis or Chagas' Disease?
20. Received a transfusion or injection of blood or blood products while in England, Scotland, Wales, Northern Ireland, the Channel Islands or the Isle of Man from 1 January 1980 to 31st December 1996, or lived there for a total time which adds up to 6 months or more?

Other questions:

21. Are you prone to fainting?
22. Are you diabetic, or do you have a history of impaired glucose tolerance?
23. Are you pregnant?

On the day of the class, if you are feeling unwell, or have a fasting glucose level of 7.0 mM or higher, you should **not** be a subject.

The purpose of the above questions is for you to determine whether it is safe, for others and for yourself, for your blood to be donated in this class. You do not have to reveal your answers to these questions to any of your classmates or to the teaching staff. If you wish to ask about any of these questions please contact Dr Karen Gibson on 9385 3650. Any such consultation will be treated in confidence.

Deidentified group data from this class will be shared with the rest of the class. These data, along with attendance sheets, consent forms and incident reports will be kept for a period of 7 years.

Complaints may be directed to the Ethics Secretariat, The University of New South Wales, SYDNEY 2052 AUSTRALIA (phone 9385 4234, fax 9385 6648, email ethics.sec@unsw.edu.au). Any complaint you make will be investigated promptly and you will be informed of the outcome.

Your decision whether or not to participate will not prejudice your future relations with the University of New South Wales. If you decide to participate, you are free to withdraw your consent and to discontinue participation at any time without prejudice.

If you have any questions, please feel free to ask any demonstrator on this class. If you have any additional questions later, Dr Karen Gibson, 9385 3650, will be happy to answer them.

You will be given a copy of this form to keep.

**THE UNIVERSITY OF NEW SOUTH WALES
PARTICIPANT INFORMATION STATEMENT AND CONSENT FORM (continued)
Practical class – Gestational Diabetes Mellitus and Screening in Pregnancy**

I understand that I am making a decision as to whether or not to participate as a subject for the above practical class. My signature indicates that, having read the Participant Information Statement, and the practical notes which explain the full procedure, I have decided to take part in the study.

I understand that if I have any questions relating to my participation as an experimental subject in this practical class I may ask the demonstrator in charge of the class who will be happy to answer them. I understand that my participation as a subject is voluntary and that I can withdraw from being a subject at any time without prejudice to my relationship with the University of New South Wales.

Subject's Name	Signature

.....
Witnessed by

.....
Date

.....
Please PRINT Name of witness

12. PAST EXAMINATION QUESTIONS

MID SESSION EXAMINATION, SEPTEMBER, 2007

1) 25 multiple choice questions (a mixture of A to E and K-code) in 50 minutes.

2) 6 short answer questions in 40 minutes:

Question 1. (5 minutes)

An overweight friend has been following a sensible low fat low calorie diet for 3 months. In the first 2 months on the diet, he lost weight every week. Now, however, his weight loss has slowed down to almost nothing, despite the fact that he continues to follow the diet. He still needs to lose more weight.

Your friend wonders why he has stopped losing weight. How would you explain this phenomenon to him (in lay terms)?

Question 2. (5 minutes)

Describe the hormonal changes which occur in the hypothalamic-pituitary-gonadal axis at the onset of puberty. What factors influence the timing of puberty?

Question 3. (5 minutes)

Harry and his partner Sue are both 40 years old and have been trying unsuccessfully to conceive for 18 months. Briefly describe the factors which might be contributing to their infertility.

Question 4. (5 minutes)

Physical examination and blood and urine tests taken from a 6 year old child with a history of precocious sexual development revealed the following:

	Patient level	Normal level
<u>Physical examination</u>		
Height	130 cm	95th percentile = 125 cm
Weight	33 kg	95th percentile = 27 kg
Blood pressure	150/90	~ 100/70

Plasma

11-deoxycortisol	10-30 µg/100 mL	<0.1 µg/100 mL
ACTH	500 pg/mL	30-120 pg/mL

Urine

17-ketosteroids	15-20 mg/24h	<0.5 mg/24h
Tetrahydrocompound S	1 mg/h	<0.5 mg/h

What do you think is the likely diagnosis? Briefly explain why each of the above results might be abnormal.

Question 5. (10 minutes)

- What is glycaemic index?
- Describe in detail how you could measure the glycaemic index of a new brand of biscuits available in supermarkets and classify the biscuits as low, medium or high GI.
- What is glycaemic load?
- Which of these terms (glycaemic index or glycaemic load) do you consider to be the more useful and why?

Question 6. (10 minutes)

A 20 year old science student has been brought unconscious into the emergency department late at night by her worried parents. They say that she has always been in good health, but has been feeling unwell for the past few days. They had wanted her to go to her local doctor yesterday but she had said that she was too busy studying for exams. She has also been very thirsty and has been drinking "lots of water". Blood tests, renal function tests and a physical examination are carried out.

Provide a **very brief** explanation for each of the results below, using only the space provided. The table continues over the page.

	Patient result	Normal result	Brief explanation
Blood glucose concentration	70 mmol/L	<8 mmol/L	
Glucosuria	++++		

*****The remainder of this question has not been released *****

FINAL EXAMINATION, NOVEMBER, 2007

1) 25 multiple choice questions (a mixture of A to E and K-code) in 50 minutes.

2) 6 short answer questions in 40 minutes:

Question 1. (10 minutes)

Describe the maternal changes that occur during pregnancy in

- (a) blood volume and composition
- (b) the cardiovascular system.

Question 2. (10 minutes)

Write short notes on

- (a) fetal programming of Syndrome X
- (b) chimeras and maternal disease
- (c) maternal diet, renal development and high blood pressure in adult life.

Question 3. (5 minutes)

- (a) List the main fluxes of fluid into and out of the amniotic cavity during fetal life.
- (b) List the functions of amniotic fluid.

Question 4. (5 minutes)

Briefly describe the adaptations that enable fetal survival despite an arterial oxygen tension that is only about 20% of healthy adult values.

Question 5. (5minutes)

- (a) How long is gestation in humans and what is meant by the terms “Preterm” and “Post-term”?
- (b) A woman with a regular 28 day menstrual cycle has recently discovered that she is pregnant. If her last menstrual period had commenced on the 10th of October 2007, what is her estimated date of delivery?
- (c) List 6 important risk factors for premature labour.

Question 6. (5 minutes)

Why does the newborn, especially the premature newborn, have difficulty maintaining its body temperature?

MID SESSION EXAMINATION, SEPTEMBER, 2008

1) 20 multiple choice questions (a mixture of A to E and K-code) in 40 minutes.

2) 8 short answer questions in 40 minutes:

Question 1. (10 minutes).

Peter is an 18 year old gym member who has been injecting himself with Sustanon (testosterone esters) and tamoxifen (a selective estrogen receptor modulator), weekly for the past 6 months. He visits his GP with concerns that he is developing tender swellings on his chest, either side around the area of his nipples (gynaecomastia). On examination it is found that his testes are soft and small.

- a) Describe the physiological effects of anabolic steroids which entice people like Peter to self administer these drugs.
- b) What is the rationale for taking tamoxifen in conjunction with Sustanon?
- c) Why has Peter developed gynaceomastia?
- d) What is the likely explanation for the findings regarding his testes?

Question 2. (10 minutes).

A 20 year old science student has been brought unconscious into the emergency department late at night by her worried parents. They say that she has always been in good health, but has been feeling unwell for the past few days. They had wanted her to go to her local doctor yesterday but she had said that she was too busy studying for exams. She has also been very thirsty and has been drinking "lots of water". Blood tests, renal function tests and a physical examination are carried out.

Provide a **very brief** explanation for each of the results below, using only the space provided. The table continues over the page.

	Patient result	Normal result	Brief explanation
Blood glucose concentration	70 mmol/L	<8 mmol/L	
Glucosuria	++++		

*****The remainder of this question has not been released*****

Question 3. (5 minutes)

Describe the mechanisms of action of the combined oral contraceptive pill.

Question 4 (5 minutes).

Belinda is a 38 year old mother of two and a substitute teacher. Over the last 2 years she has gradually gained 10 kg of weight. She has been feeling depressed and chronically exhausted. She feels cold all the time, and now her hair is starting to fall out. She has also been constipated despite the fact that she eats a healthy high-fiber diet and drinks plenty of water.

On examination she has a soft swelling in her neck which moves on swallowing.

Blood test results were:

T4 2 µg/100 ml (normal 4 – 11 µg/100 ml)

TSH >10 mU/L (normal 0.5-5.0 mU/L)

Explain the physiology behind Belinda's symptoms, signs and blood results.

Question 5 (5 minutes).

Rebecca and her partner Brett have been trying unsuccessfully to conceive for the past 18 months, since Rebecca ceased taking the oral contraceptive pill.

- a) How could you assess whether Rebecca was ovulating?
- b) Brett provided a semen sample for analysis. What would you consider to be a normal result?

Question 6 (5 minutes).

Matthew is 8 years old and is the shortest child in his class at school. He is concerned that he will always be short. Describe the factors which determine final adult height.

Question 7 (5 minutes)

Explain what is meant by the terms 'glycaemic index' and 'glycaemic load' and how these values are determined.

Question 8 (5 minutes)

A 52 year old woman who is otherwise healthy, presents to her GP suffering from hot flushes, night sweats and insomnia.

- a) What changes occur in the hypothalamic-pituitary-ovarian axis as women age?
- b) What other signs and symptoms are likely to occur around menopause and why?

FINAL EXAMINATION, NOVEMBER, 2008

1) 20 multiple choice questions (a mixture of A to E and K-code) in 40 minutes.

2) 8 short answer questions in 50 minutes:

Question 1. (10 minutes)

Use your knowledge of maternal physiology to explain the mechanisms underlying each of the following conditions which are commonly experienced by pregnant women:

- (a) ankle swelling
- (b) supine hypotension
- (c) anaemia
- (d) warm hands and feet even when the weather is cold
- (e) glycosuria.

Question 2. (10 minutes)

"The fetus is a miniature adult." Discuss, with reference to the cardiovascular system and at least one other body system.

Question 3. (5 minutes)

Describe the cycle of events that is likely to result in fetal death when there is a sustained fall in oxygen availability of more than 50%.

Question 4. (5 minutes)

Write brief notes on how the following affect fetal breathing movements:

- i) A reduction in fetal arterial oxygen tension (P_{aO_2}).
- ii) An increase in fetal arterial carbon dioxide tension (P_{aCO_2}).
- iii) Fetal asphyxia (reduced P_{aO_2} **and** increased P_{aCO_2}).

Very briefly comment on the effects that these three changes in blood gases would have on alveolar ventilation in an adult.

Question 5. (5minutes)

What is the evidence that renal development can be programmed?

Question 6. (5 minutes)

Compare and contrast fetal urine and fetal lung liquid.

Question 7. (5 minutes)

Describe the human placenta. In what ways does the sheep placenta differ from the human placenta?

Question 8. (5 minutes)

Lisa, a mother who is breast feeding her 5 month old baby, is concerned that her periods have not yet returned. Her friend Joanna, who delivered her baby only 4 months previously has already had two normal periods. Joanna is bottle feeding her baby. Use your knowledge of the physiology of lactation to explain Lisa's amenorrhea.

MIDSESSION EXAMINATION, SEPTEMBER 2009

1) 20 multiple choice questions (a mixture of A to E and K-code) in 40 minutes.

2) 8 short answer questions in 50 minutes:

Question 1. (10 minutes)

A 6 year old child with a history of precocious sexual development presents to a paediatric endocrinologist. Physical examination and blood and urine tests revealed the following:

	<u>Patient level</u>	<u>Normal level</u>
<u>Physical examination</u>		
Blood pressure	150/90	~ 100/70
<u>Plasma</u>		
11-deoxycortisol	10-30 µg/dL	<0.1 µg/dL
Cortisol	not detected	5-25 µg/dL
ACTH	500 pg/mL	30-120 pg/mL
Aldosterone	0.1 ng/dL	3-10 ng/dL
<u>Urine</u>		
17-ketosteroids	15-20 mg/24h	<0.5 mg/24h

- What do you think is the likely diagnosis?
- Explain why each of the above results might be abnormal.
- Why was this child given glucocorticoid treatment?

Question 2. (10 minutes).

A 20 year old science student has been brought unconscious into the emergency department late at night by her worried parents. They say that she has always been in good health, but has been feeling unwell for the past few days. They had wanted her to go to her local doctor yesterday but she had said that she was too busy studying for exams. She has also been very thirsty and has been drinking "lots of water". Blood tests, renal function tests and a physical examination are carried out.

Provide a **very brief** explanation for each of the results below, using only the space provided. The table continues over the page.

	Patient result	Normal result	Brief explanation
Blood glucose concentration	70 mmol/L	<8 mmol/L	
Glucosuria	++++		

*****The remainder of this question has not been released *****

Question 3. (5 minutes)

You are having a conversation with a health conscious friend. He has heard about the glycaemic index and has decided to only eat foods that are labelled “low GI”. Given your knowledge of the glycaemic index and how it is measured, do you think that this is a sensible diet regime? Justify your answer.

Question 4. (5 minutes)

Describe how the ratio of testosterone to epitestosterone can be used to detect testosterone use in performance athletes. Include in your answer a description of methods that could be used to escape detection (i.e. to produce a normal ratio), and an explanation of their physiological basis.

Question 5. (5 minutes)

This question relates to the progesterone only pill (minipill).

- (a) Briefly describe the mechanisms of action of this pill.
- (b) Under what circumstances might women take this pill?
- (c) How effective is this pill?

Question 6. (5 minutes)

What effect does head-out water immersion have on renal sodium excretion? Explain the mechanisms by which this occurs.

Question 7. (5 minutes)

Name three gut peptides that regulate food intake or energy homeostasis and describe (a) the sites of their synthesis, (b) the stimulators for their release and (c) their major physiological actions.

Question 8. (5 minutes)

Your 16 year old niece is concerned that she has not yet had her first menstrual period. Given your knowledge of puberty and the factors which influence the timing of puberty, what advice would you give her? How could you assess if her pubertal development has commenced?

FINAL EXAMINATION, NOVEMBER 2009

1) 20 multiple choice questions (a mixture of A to E and K-code) in 40 minutes.

2) 8 short answer questions in 50 minutes:

Question 1. (10 minutes).

“The fetus is a miniature adult.” Discuss, with reference to the respiratory system and at least one other body system.

Question 2. (10 minutes).

What is the evidence that renal development can be programmed? Give examples of approaches (experiments, animal models etc) that could be used to examine this phenomenon.

Question 3. (5 minutes).

- (a) Describe the changes that occur in the maternal cardiovascular system during pregnancy.
(b) Why should hospital staff not leave pregnant women lying supine for extended periods?

Question 4. (5 minutes).

- (a) Describe the functions of amniotic fluid.
(b) What problems result from oligohydramnios and polyhydramnios?

Question 5. (5 minutes).

The fetus consumes twice as much oxygen per kg body weight as the newborn, and yet its oxygen supply is much lower. Describe how it has adapted to develop in a low oxygen environment.

Question 6. (5 minutes).

Draw a graph showing luteinising hormone (LH) levels from 10 weeks gestation to term. Explain why this pattern of secretion occurs.

Question 7. (5 minutes).

Describe the production of oxytocin and its role in human labour.

Question 8. (5 minutes).

Describe the changes that occur in the neonate's cardiovascular system after birth.

MIDSESSION EXAMINATION, SEPTEMBER 2010

1) 25 multiple choice questions (a mixture of A to E and K-code) in 50 minutes.

2) 8 short answer questions in 40 minutes:

Question 1. (10 minutes).

Physical examination, morning blood tests and 24h urine tests taken from a 6 year old child with a history of precocious sexual development revealed the following:

	Patient level	Normal level
<u>Physical examination</u>		
Height	130 cm	95th percentile = 125 cm
Weight	33 kg	95th percentile = 27 kg
Blood pressure	150/90	~ 100/70
<u>Plasma</u>		
Cortisol	30 nmol/L	280-550 nmol/L (morning)
11-deoxycortisol	20 µg/100 mL	<0.1 µg/100 mL
ACTH	500 pg/mL	30-120 pg/mL (morning)
<u>Urine</u>		
17-ketosteroids	15-20 mg/24h	<0.5 mg/24h
Tetrahydrocompound S	1 mg/h	<0.5 mg/h

- (i) What do you think is the likely diagnosis?
(ii) Briefly explain why each of the above results might be abnormal.
(iii) Why would the doctor commence treatment with cortisone?

Question 2. (10 minutes).

An 18 year old apprentice plumber, Bob, has been brought unconscious into the emergency department by his concerned boss. He says that Bob had been complaining of feeling unwell for the past few days. He had been drinking "stacks of water" and kept having to urinate. Blood tests, renal function tests and a physical examination are carried out.

Provide a **very brief** explanation for each of the results below, using only the space provided. The table continues over the page.

	Patient result	Normal result	Brief explanation
Blood glucose concentration	70 mmol/L	<8 mmol/L	
Glucosuria	++++		
Urine flow rate	30 mL/min	0.3 – 15 mL/min	

*****The remainder of this question has not been released *****

Question 3. (5 minutes)

A 50 year old woman who is otherwise healthy, presents to her GP suffering from hot flushes.

- What changes might be occurring in this woman's hypothalamic-pituitary-ovarian axis as a result of aging?
- What effect does menopause have on bone? Explain the mechanism for this effect.

Question 4. (5 minutes).

- What is glycaemic index?
- Describe in detail how you could measure the glycaemic index of a new brand of fruit and nut muesli bars to be sold in health food shops. What ranges of values would lead you to classify the bars as low, medium or high GI?

Question 5. (5 minutes).

Describe the pathways through which testosterone and its conversion products can act. For each of these pathways give two examples of the results of these actions.

Question 6. (5 minutes).

Explain what is meant by prorenin activation, and describe the ways in which this can occur. What are the consequences of a) prorenin and b) renin binding to the (pro)renin receptor? Use diagrams to illustrate your answer if necessary.

FINAL EXAMINATION, NOVEMBER 2010

1) 20 multiple choice questions (a mixture of A to E and K-code) in 40 minutes.

2) 8 short answer questions in 50 minutes:

Question 1. (10 minutes).

"The fetus is a miniature adult." Discuss, with reference to the cardiovascular system and at least one other body system.

Question 2. (10 minutes).

Describe the maternal changes that occur during pregnancy in

- the cardiovascular system
- the kidney and urinary system.

Question 3. (5 minutes)

Sharon and her partner David have been trying unsuccessfully to conceive for 12 months. They are both 30 years old and work in very stressful jobs.

- (i) How could you assess whether Sharon was ovulating?
- (ii) David provided a semen sample for analysis. What would you consider to be a normal result?

Question 4. (5 minutes).

"It doesn't matter if amniotic fluid volume is abnormal." Discuss this statement and explain the causes of amniotic fluid volume abnormalities.

Question 5. (5 minutes).

Describe how the fetal response to a sustained fall in oxygen availability of more than 50% results in a cycle of events likely to end in fetal death.

Question 6. (5 minutes).

Write brief notes on how the following affect fetal breathing movements:

- i) A reduction in fetal arterial oxygen tension (P_{aO_2}).
- ii) An increase in fetal arterial carbon dioxide tension (P_{aCO_2}).
- iii) Fetal asphyxia (reduced P_{aO_2} **and** increased P_{aCO_2}).

Very briefly comment on the effects that these three changes in blood gases would have on alveolar ventilation in an adult.

Question 7. (5 minutes).

Describe the differences between the fetal and adult adrenal glands in terms of size, regions and hormone production. Use cross sectional drawings to illustrate your answer if necessary.

Question 8. (5 minutes).

Describe two animal models of fetal programming for disease in adult life and two epidemiological studies that suggest that maternal undernutrition programs for cardiovascular disease and diabetes in adult life of the offspring.

MIDSESSION EXAMINATION, SEPTEMBER 2012

1) 25 multiple choice questions (a mixture of A to E and K-code) in 50 minutes.

2) 6 short answer questions in 40 minutes:

Question 1. (10 minutes)

There are many variants of congenital adrenal hyperplasia (CAH). Cameron Jones had 11 β -hydroxylase deficiency and was hypertensive. On the other hand, 21 β -hydroxylase deficiency is associated with excessive loss of salt in the urine ('salt wasting').

- (i) Explain the mechanism underlying hypertension in 11 β -hydroxylase deficiency.
- (ii) Explain why salt wasting occurs with 21 β -hydroxylase deficiency.
- (iii) Cameron Jones was treated with cortisone. Explain the underlying basis for this treatment.

Question 2. (10 minutes).

An 18 year old apprentice plumber, Bob, has been brought unconscious into the emergency department by his concerned boss. He says that Bob had been complaining of feeling unwell for the past few days. He had been drinking "stacks of water" and kept having to urinate. Blood tests, renal function tests and a physical examination are carried out.

Provide a **very brief** explanation for each of the results below, using only the space provided. The table continues over the page.

	Patient result	Normal result	Brief explanation
Blood glucose concentration	70 mmol/L	<8 mmol/L	
Glucosuria	++++		
Urine flow rate	30 mL/min	0.3 – 15 mL/min	

*****The remainder of this question has not been released *****

Question 3. (5 minutes)

Describe (i) how the hormones found in combination oral contraceptives alter hypothalamic-pituitary function, and (ii) how this prevents conception.

Question 4. (5 minutes)

Paul, 26 years old, undergoes fertility assessment with the following results:

Gynaecomastia

Testicular volume -11 mL (reference range: 15-30mL)

Semen analysis - Azoospermia (i.e. no sperm detected)

Urinary Testosterone:Epitestosterone ratio - 10.1 (normal range: 0.1-3.99)

Subsequent discussions with the doctor revealed that Paul, an amateur athlete, had been self-administering synthetic testosterone esters for the past two years.

Briefly explain why the abnormal findings described above could be caused by his testosterone use. (5 minutes)

Question 5. (5 minutes).

Why does head-out water immersion cause an increase in urine flow rate?

Question 6. (5 minutes)

Describe the changes which occur in the hypothalamic/pituitary/gonadal axis at the onset of puberty in females.

FINAL EXAMINATION, NOVEMBER 2012

1) 25 multiple choice questions (a mixture of A to E and K-code) in 50 minutes.

2) 6 short answer questions in 50 minutes:

Question 1. (10 minutes)

“The fetus is a miniature adult.” Discuss, with reference to the respiratory system and the adrenal gland.

Question 2. (10 minutes)

The two parts of this question are of equal value.

- (i) How is gestational diabetes commonly detected in Australia? In your answer explain why two tests are needed instead of one.
- (ii) Discuss the mechanisms underlying gestational diabetes, and explain why uncontrolled gestational diabetes can lead to excessive fetal growth.

Question 3. (5 minutes)

Describe the changes that occur in the volume and composition of maternal blood during pregnancy.

Question 4. (5 minutes)

A breastfeeding woman goes for her 6 weeks post delivery check up and is surprised that her doctor suggests that she goes on the “minipill” (progesterone-only) to prevent pregnancy. “But doctor, I thought I couldn’t get pregnant if I was breastfeeding!”

- (i) Explain why lactation reduces fertility.
- (ii) Is lactation a reliable method of contraception? Why/why not?
- (iii) Why did the doctor suggest the use of a progesterone-only pill, rather than a combined (estrogen plus progesterone) contraceptive?

Question 5. (5 minutes)

Describe how the fetus responds to an acute reduction in oxygen supply.

Question 6. (5 minutes)

Life expectancy for Indigenous Australians is up to 17 years less than for non-Indigenous Australians. Discuss how epigenetic factors could contribute to this.

13. TIMETABLE - 2012

PHSL3221 Endocrine, Reproductive and Developmental Physiology

Lectures: Monday 12 noon (MatC), Monday 1 pm (MatC), Tuesday 1 pm (MatD).
 Pracs/PBLs: Thursday 2 -5 pm (location indicated below. **Note 329 is in the Biological Sciences Building**; Rooms G2, G4, 106, 108, 109,110, 204 & LG02 are in the Wallace Wurth Building).

WEEK 1			
Monday 16/7	12 pm	Introduction and course information	Dr K Gibson
Monday 16/7	1 pm	Concepts in endocrinology	Dr K Gibson
Tuesday 17/7	1 pm	Discussion class: Hormonal effects of water immersion	Dr K Gibson
WEEK 2			
Monday 23/7	12 pm	Insulin physiology	Dr N Turner
Monday 23/7	1 pm	Diabetes and islet B cells	Dr R Laybutt
Tuesday 24/7	1 pm	Update on the renin angiotensin system	Dr K Gibson
Thursday 26/7	2 pm	PBL 1.1 (Rooms 109/110/G2/G4)	PBL tutors
WEEK 3			
Monday 30/7	12 pm	Gut hormones and metabolism	Dr J Cantley
Monday 30/7	1 pm	Growth	Dr K Gibson
Tuesday 31/7	1 pm	Body weight regulation	Dr L Zhang
Thursday 2/8	2 pm	PBL 1.2; PBL 2.1 (Rooms 202/204/106/108)	PBL tutors
WEEK 4			
Monday 6/8	12 pm	Calcium metabolism	Dr K Gibson
Monday 6/8	1 pm	The adrenal medulla and pheochromocytoma	Dr K Gibson
Tuesday 7/8	1 pm	Endocrine functions of white adipose tissue	Dr M Swarbrick
Thursday 9/8	2 pm	PBL 2.2; PBL 3.1 (Rooms 109/110/G2/G4)	PBL tutors
WEEK 5			
Monday 13/8	12 pm	Puberty	Dr K Gibson
Monday 13/8	1 pm	Regulation of fertility	Dr A Finch
Tuesday 14/8	1 pm	Discussion class: growth and puberty clinical cases	Dr K Gibson
Thursday 16/8	2 pm	PBL 3.2; PBL 4.1 (Rooms 202/204/106/108)	PBL tutors
WEEK 6			
Monday 20/8	12 pm	Androgens and anabolic steroids	Dr K Gibson
Monday 20/8	1 pm	Fertility and assisted reproductive technology	Dr A Clark
Tuesday 21/8	1 pm	Discussion class: Cross-dressing or crossing over?	Dr K Gibson
Thursday 23/8	2 pm	PBL 4.2 (Rooms LG02/204/G2/G4)	PBL tutors
WEEK 7			
Monday 27/8	12 pm	Menopause and andropause	Dr K. Gibson
Monday 27/8	1 pm	Practice exam questions	Dr K Gibson
Tuesday 28/8	1 pm	Self study	N/A
Thursday 30/8	2 pm	Midsession Exam (Room 329 Biosciences Bldg)	Dr K Gibson
RECESS: 3rd September – 9th September			

WEEK 8			
Monday 10/9	12 pm	Introduction to Fetal Physiology	Dr K Gibson
Monday 10/9	1 pm	Maternal physiology	Dr K Gibson
Tuesday 11/9	1 pm	Fetal circulation	Dr K Gibson
Thursday 13/9	2 pm	Practical Class – Gestational diabetes and screening in pregnancy (Room 329 Biosciences)	Dr K Gibson + staff
WEEK 9			
Monday 17/9	10 am	Endocrine assignment due	BBS office
Monday 17/9	12 pm	Neonatal Intensive Care	Dr K Lui
Monday 17/9	1 pm	Fetal responses to hypoxia	Dr K Gibson
Tuesday 18/9	1 pm	Regulation of fetal fluids	Dr K Gibson
Thursday 20/9	2 pm	Group 1 – neonatal nursery	Dr K Lui
		Groups 2 and 3 – Two peas in a pod (Room 329)	Dr K Gibson
		Group 4 – presentation preparation	Self study
WEEK 10			
Monday 24/9	12 pm	Fetal breathing	Dr K Gibson
Monday 24/9	1 pm	Fetal endocrinology	Dr K Gibson
Tuesday 25/9	1 pm	Epigenetics	Prof E Lumbers
Thursday 27/9	2 pm	Group 2 – neonatal nursery	Dr K Lui
		Groups 1, 3 & 4 - presentation preparation	Self study
WEEK 11			
Monday 1/10	12 pm	No lecture – public holiday	N/A
Monday 1/10	1 pm	No lecture – public holiday	N/A
Tuesday 2/10	1 pm	Developmental origins of health and disease	Prof E Lumbers
Thursday 4/10	2 pm	Group 3 – neonatal nursery	Dr K Lui
		Groups 1 & 4 – Two peas in a pod (Room 329)	Dr K Gibson
		Groups 2– presentation preparation	Self study
WEEK 12			
Monday 8/10	12 pm	Placenta A	Dr K Gibson
Monday 8/10	1 pm	Placenta B	Dr K Gibson
Tuesday 9/10	1 pm	Parturition	Dr K Gibson
Thursday 11/10	2 pm	Presentations – all students (Room 329)	Dr K Gibson + staff
WEEK 13			
Monday 15/10	12 pm	Adaptation to life after birth	Dr K Gibson
Monday 15/10	1 pm	Lactation and early infant nutrition	Dr K Gibson
Tuesday 16/10	1 pm	No lecture	N/A
Thursday 18/10	2 pm	Presentations – all students (Room 329)	Dr K. Gibson + staff